

PStill

Multiformat converter and PDF transcoder

Copyright Dipl.-Ing. Frank Siegert, Stauferweg 35, 72555 Metzingen, Germany, eMail frank@wizards.de

THIS DOCUMENT IS PART OF THE PSTILL DISTRIBUTION AND MAY NOT BE DISTRIBUTED OR PUBLISHED WITHOUT PERMISSION OF THE AUTHOR.

Usage is restricted by the conditions as stated in the license agreement, see Appendix for copyright notice.

1. Introduction

This document describes the installation and usage of the PStill/Win product. Its intended audience are users and system administrators. Parts of it, describing the usage of the command line version also apply to the other command line versions of PStill e.g. the Linux version. Users only interested in the command line version may skip the parts about the Windows installation and continue at section 4, however the description of the options in section 2.5 may be helpful also.

1.1 What is PStill

PStill is a multiformat file converter specialize in PDF. It works by reading and interpreting PDF, PostScript/EPS, TIFF, JPEG, PNG and BMP files and writing PDF, PDF/X, PDF/A, TIFF, JPEG, PNG or EPS/PS (with PSRW-type license). During this conversion PStill does color conversion, simplification and normalization, creating a more simpler and reliable version that still displays and prints the same. It can also apply changes to the content, apply stamps, change color spaces, flatten transparency, convert text to outlines, include fonts and much more. PStill also can combine files – also as mix of all supported input formats. It also includes a set of tools to convert on the command line, send jobs over the network.

2.1 Installation of PStill for Windows (PStill/Win)

The PStill version for MS Windows is distributed as installer application. You'll need at least a system with a CPU supporting SSE2 extensions and 1 Gbyte or more memory. Windows XP, while Windows Vista, Windows 7 (32 and 64 bit), Windows 8 and Windows 10 are supported.

You start the installation process by double clicking on the installer icon. The installation process creates a directory on your hard disk containing all the program helper files and the program executable itself. The default location is “[c:\program files\(x86\)\gpstill](#)” but you can change the location of this directory during install.

As soon as you start the installer by double clicking its icon it will show you the programs licenses agreement. By continuing the installation you accept your consent with the conditions and rules of the agreement.

As portable installation PStill can be placed on an USB stick or in a network environment and run from there. Just copy the GPStill folder with all content from “[c:\program files\(x86\)\gpstill](#)” to the new location. If you received a “license.lic” unlock code file, place it in that folder in the new location.

Note: When you install a new release of PStill/Win over an old installation, the Installer will replace some files you might have edited, e.g. PStillConfig.inf. Please backup these files before installation if you have modified them.

Deinstallation is easy, just open up the 'System'→'Apps'/'Software' preferences of Windows and select "PStill PostScript to PDF converter (remove only)".

2.2 Using PStill the first time

When installation has finished PStill should be available on your desktop and the Windows start menu. Please locate the program icon, it should look like this:



The GUI version of PStill ("GPStill.exe") is started by double clicking on the program icon. GPStill will start up and display its welcome dialog.

The command line version of PStill "pstill.exe" is also installed by default in the PStill program folder. It has the same features as the GUI version but can be used in your own scripts more easily.

Also two other command line tools are installed: 'pdfin.exe' to create linearized PDF and 'pdfasm.exe' to fast concat PDFs.

If you do not plan to use the command line to convert files just disregard any mentioning of 'command line options' like '-c' or 'd...' in the following text, these are only needed for "pstill" not "GPStill".

2.3 Licensing PStill

PStill may ask you on start up for a license code. It is „Shareware“- that means you can tryout the program but if you want to use it you need to purchase a license. You will then receive a code to activate it.

If you already have received a license code please choose 'Enter License' and enter it in the licensing dialog. The code should look similar to this sample:

abcdefghi=01a02b03c04d05e!ABCDEFGH

where the first string is a unique identifier of your installation. Please note that the key is case sensitive on input, so be sure to enter it exactly as provided in the registration information you have received.

To get a license code or program update please visit the PStill web page:

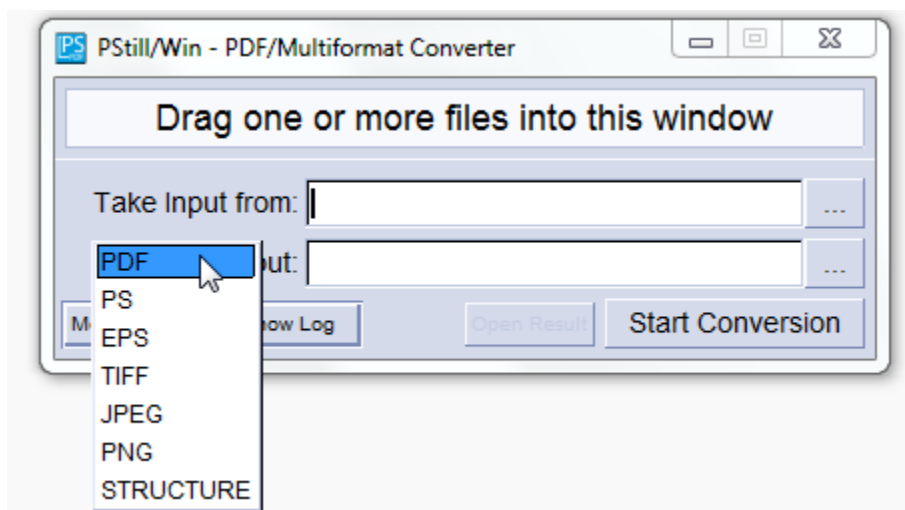
<http://www.pstill.com>

With your license fee you are directly funding future development of PStill.

2.4 Sample session – Conversion of a PostScript file to PDF

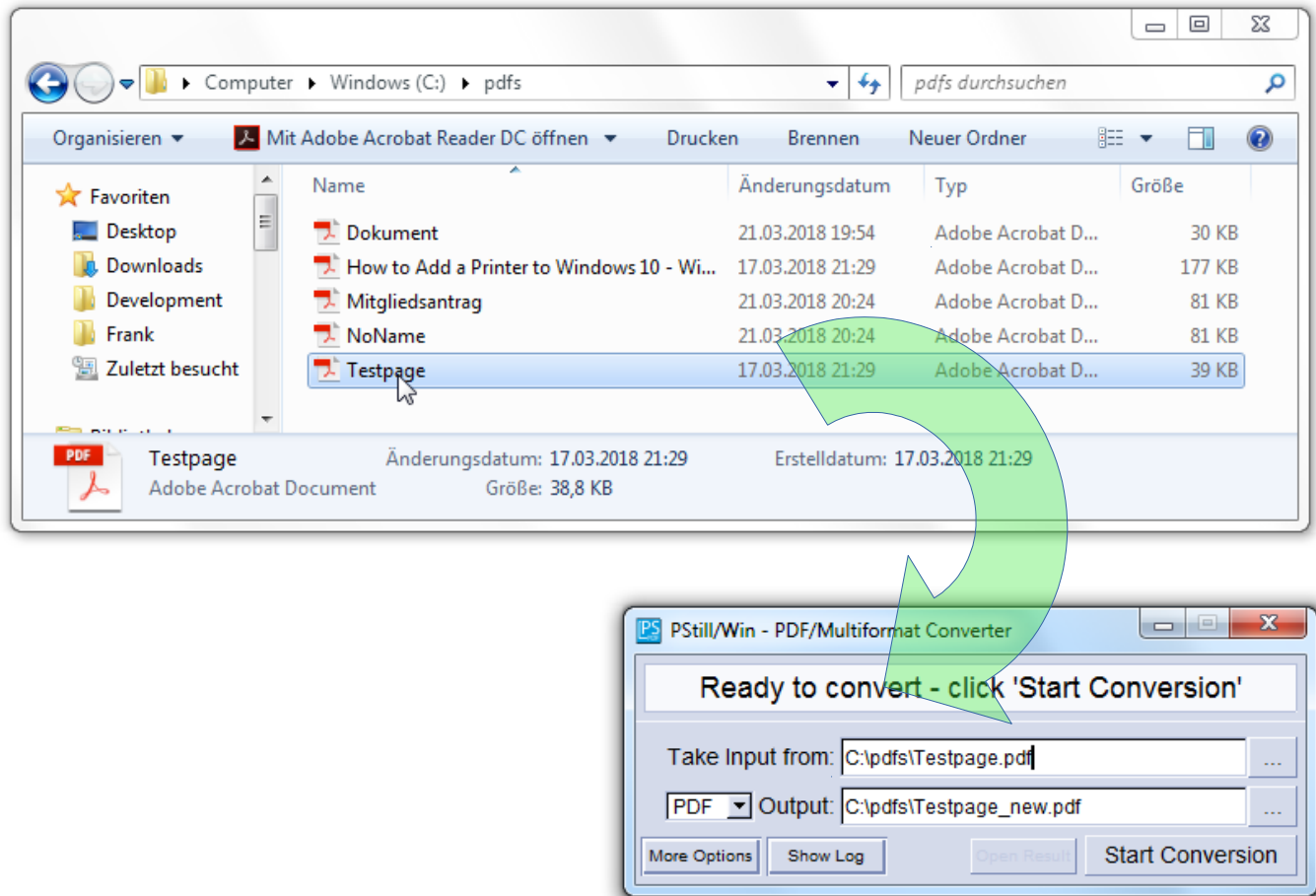
To continue with your evaluation click on 'Return to continue', type your 'Return' key. A licensed version of PStill does show the Welcome window only a very short time and you will see the main window almost instantly.

GPStills main dialog will now appear. This is the window you will interact with to convert files to PDF, change settings, view the log, etc. Locate the pop-up option to select the output format:



Select a PostScript, EPS, TIFF, JPEG, PNG, BMP or PDF file using the Windows Browser or Windows Explorer and drag&drop it on this window. You can the supplied *testfile.ps* for your first tests, you can find it in the PStill folder – that is where you just had told the installer to place the program file, by default (on Windows 7/8/10): [c:\Program Files \(x86\)\GPStill](c:\Program Files (x86)\GPStill).

Your PStill window should now look like this:



2.5 Convert data

To convert just click on 'Start Conversion'.

Now on to the Options, these define what the conversion actually does. By default PStill will use its default settings, however you might want to change them. To open the option section click on the 'More Options' button, the PStill main window will expand to show the option page below the main controls.

Hint: Don't worry because there are so many options. There are ready made 'sets' of option for Office, Web and Pre-Press work. Just open 'More setup' and select the option set. This will set all options at once so you don't need to change the option dialogs. Using the sets you can also store your own setup and restore it later.

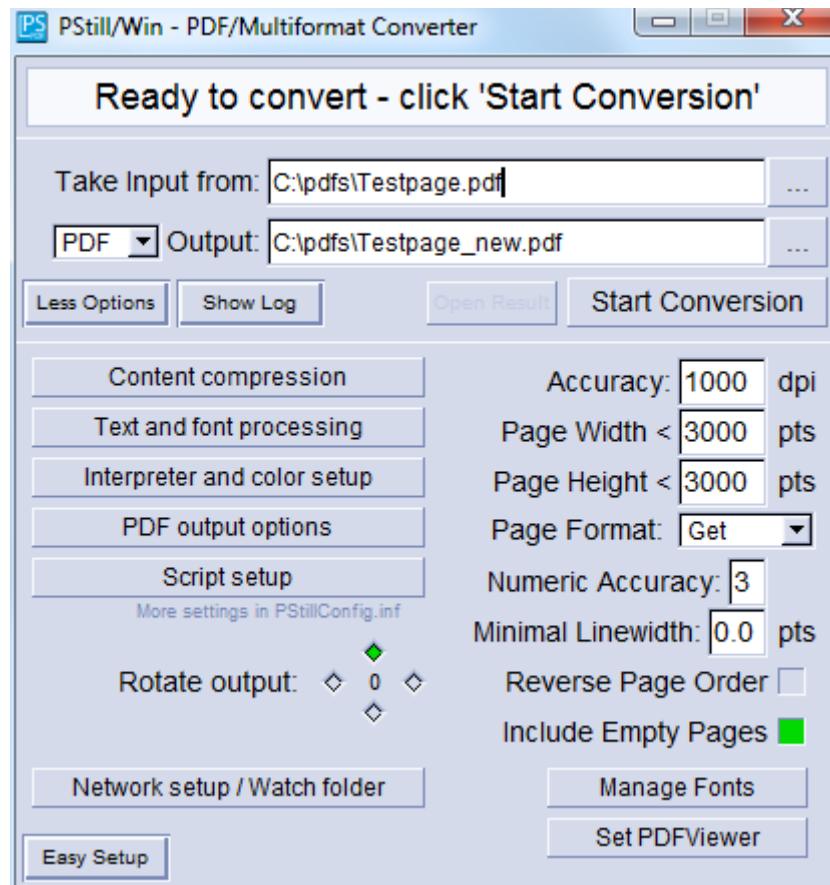
Command line: The command line program 'pstill.exe' also has a 'set all to sensible values'-option by the name of

```
pstill.exe -M defaultall -o output.pdf input
```

To get a list of available options you can just run

```
pstill.exe -H | more
```

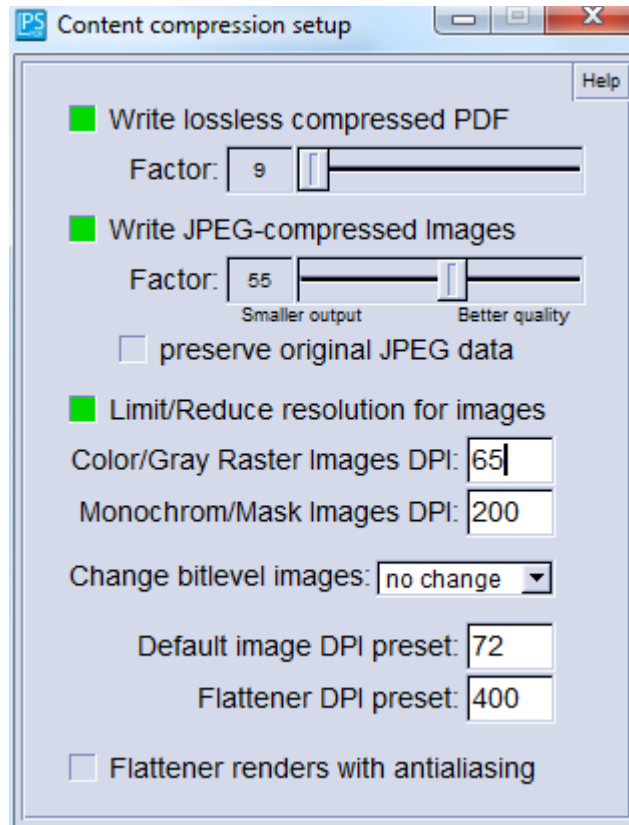
These are the options PStill will show you when installed the first time:



By modifying the options you can control how PStill will convert its input - how elements are taken over to the result, images are handled, how text is converted and what kind of special processing PStill does.

Hint: If you want to find out which options are needed for calling the command line version of PStill you can also use GPStill as its conversion log shows the 'options' as needed for the command line program after a conversion right at the top.

Compression Options



Write flate compressed PDF [default: on]

Command line options: `-c`, `-c -c`, `-c -c -c` and `-c -c -c -c` (the more `-c` the better the compression)

Will cause PStill to write compressed and binary PDFs. The used loss-less compression method is compatible to the PDF specification 1.1 so you need at least Acrobat(R) Reader(TM) Version 3.0 to view these files. You will notice compression makes the PDF files much smaller so it is recommended you leave this option on.

PStill will use this compression for page contents (text and artwork), fonts and raster images. You will notice no visible difference to uncompressed PDFs as the compression method is loss-less. Think of it as a kind of “ZIP”ed file (in fact the used method is similar to ZIP).

You can specify a compression level here, from 6 to 9 (corresponding to ZIP compression levels)

Write JPEG-compressed images [default: off]

Command line option: `-J #`, where # is the JPEG quality

Will cause PStill to write suitable images DCT (another term for 'JPEG') compressed in the output. Suitable images are gray and color raster images. This option has no effect on monochrome bit-level images or mask. The used compression is “lossy”, so the image may degrade in quality.

The quality setting allows to setup the compression level, where 0 means very small output but bad quality and 100 large output but best quality. Good values are 60 to 90.

PStill allows to keep JPEG data unchanged though the conversion. If this is possible depends on the other options, when color conversion or down-sampling is needed the image data will still be

converted.

Hint: For some kind of graphics, e.g. screen shots of dialog windows in technical documentations JPEG is entirely unsuited and will cause large and ugly results (this is not a problem of PStill, but a general issue with using JPEG for artificial images, JPEG is best suited for real-world photographs, not for plain surfaces) you will get better results using only the 'flate' compression. PStill will usually find out if JPEG compression would give a good rate and turn on Flate otherwise automatically.

Reduce resolution for raster images [default: off]

Command line option: -d placement_dpi/gray_dpi/mono_dpi

While not strictly a form of „compression“ it is placed in this dialog as it can be used to lower the output file size. By default PStill takes over raster images in their native (input) resolution, however using this option PStill can resample images to a lower DPI setting. This will cause smaller output size (E.g. for web publishing) but is not recommended for PDF generated for printing purposes. You can specify two values here. The first defines the output dpi for raster images (gray/color), the second for bit-level monochrome images and mask. If PStill encounters an image in the input that is higher in print density than the given values it will resample it in the output. If the image dpi is lower or equal however it will not change the image.

Default image presets define the default DPI in case an image file does not define it.

The transparency flattener can also be setup here, both for its output density and also to activate anti aliased output for better quality.

Flattener DPI present:

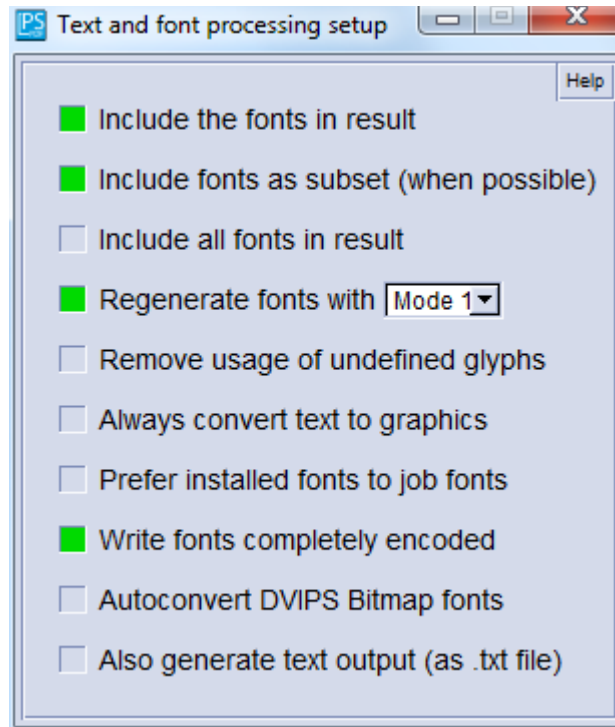
Command line option: -M transdpi=density_in_dpi -M transoptions=antialias

Define the accuracy of flattened areas in the result. PStill will convert areas using transparency to images, 'flattening' the result.

Flattening will effect all areas using transparency or declared as a 'transparency group' - for images with Smasks PStill keep the Smasks for std. PDF output, but will flatten them also for PDF/X and PDF/A output.

Antialias can be turned on to get a better looking result, processing time will increase a bit.

Text Output Options



Include Fonts [default: on]

Command line option: -i

Will cause PStill to include fonts that could not be handled by the Multiple-Master mechanism in the PDF documents. It is recommended to leave this option on. You should turn it off only to check problematic cases.

Include Fonts as subset [default: off]

Command line option: -p

Will cause PStill to include only the needed glyph set for a font. This makes for smaller output but may be undesirable if you want to edit the PDF later.

Include all Fonts [default: off or unselectable]

Command line option: -s

Will cause PStill to include all and every font in the PDF result. Usually this is not a good idea and may cause larger files without giving much advantage, however some PDF „high end“ workflows needs this option to be turned on. This option may be unselectable if PStill has used the system fonts to create its base font set, only users who did provide their own fonts to PStill at installation can enable it.

Regenerate not-extractable fonts [default: on]

Command line option: -W (for Mode 1), -W -W (for Mode 2)

Will cause PStill to regenerate problem fonts (that cannot be embedded in the PDF due to their nature. These are in most cases dynamic created fonts by certain application and driver versions. Such fonts may cause problems later so PStill flag them for non inclusion). It is recommended to leave this option on except if you encounter problems. Turning it off may cause PStill to emit

outlines for such fonts which works all the time, but causes larger output – also screen display is not so good as with fonts. Mode 1 is the default and usually the most compatible.

Always convert text to graphics [default: off]

Command line option: -P

Will cause PStill to convert all text to graphics artwork. Depending on the contents of the input it may cause larger output files, however it will solve all problems with embedded fonts – there are no text or fonts in the PDF result anymore, only graphics. Do not enable it for office use, apart from the larger size of the PDFs they become unsearchable/unindex-able also. When you create a PDF for placing in a publication (newspaper ad or similar) this option may help you to create PDF results that do look exactly as you want them, but distributed without giving out any fonts!

Prefer installed fonts to job fonts [default: on]

Command line option: -Q

Normally PStill will extract embedded fonts from the input and use these in the PDF result even if a font with the same name is available in its own font pool. If you enable this option PStill will however prefer fonts from the font pool to embedded fonts and use and include these in the PDF result.

Write fonts complete encoded [default: on]

Command line option: -K

This is an important option if you want to post-process („edit“) the PDF results. By default PStill defines a font encoding (a mapping which glyph can be found under which character value) in relation to an encoding known to PDF, normally the so-called „MacRomanEncoding“. This is perfectly allowed by the PDF specification. However it seems that some post-processing programs cannot handle this way of specifying an encoding for operations like 'insert pages' and 'edit text' (while displaying them fine). So if you plan to post-process or „submit“ the PDF turn this option on. It will cause slightly larger PDF results but enhances compatibility of the PDF result.

Auto-convert dvips bitmap fonts [default: off]

Command line option: -D

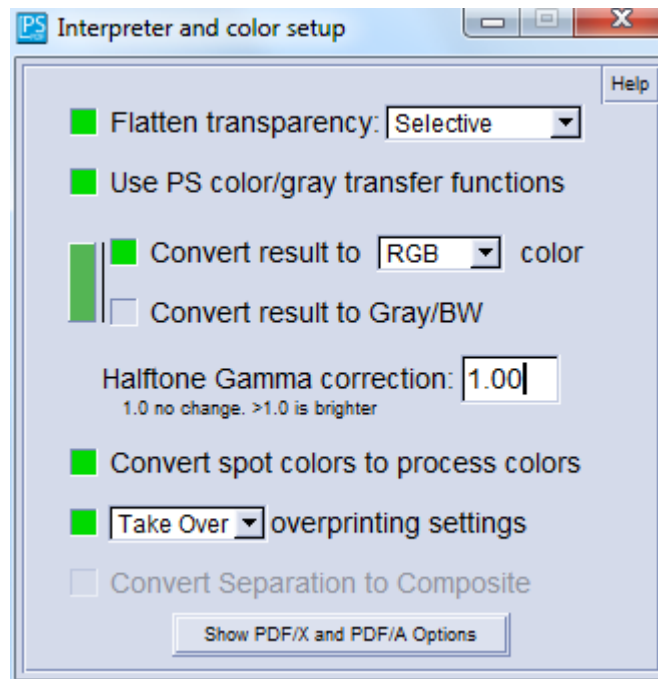
This option causes PStill to replace all marked DVIPS (TeX) bitmap fonts inside an input PS job with Type 1 versions. For this purpose the Type 1 version of the fonts (e.g. Bakoma set) must be installed and available for PStill. See the log for more info during a conversion run. Mind that if DVIPS has not written the font names during job creation ('no comments' options or very old version) PStill will not be able to replace the fonts. The log will tell you what happens.

Also generate text output [default: off]

Command line option: -M textout

PStill will generate a text file representing the text content of the generated PDF parallel to the PDF result.

Interpreter Options



Flatten transparency [default: on, selective]

Command line option: -M transmode=2

Will cause transparency in the source to be flattened. Selective means that only the areas that use transparency effects will be effected. Selective+Pat means that also pattern draws are flattened. Always will render the full page flattened in all cases. Full page only when transparency is used. The accuracy of the flattening step can be defined in the Compression Option (Flattener DPI / antialias). The accuracy of the flattening process can be setup in the compression options.

Use PS color/gray transfer functions [default: on]

Command line option: -t

Will cause PStill to take over any changes to the color transfer function in the PDF result. Color transfer is used in PostScript to change the appearance of colors or grays, e.g. to display a 'positive' image as 'negative' (inverted). It is advisable to leave this on, except if you experience problems with wrongly colored images or similar. This option has no effect on text or artwork, only raster images are affected.

PStill will take over any changes directly by changing the affected color values. It will never include 'transfer curves' or similar in the output result.

PDF output converted to CMYK/RGB color [default: on]

Command line option for RGB: -C

By default PStill will write any color representation as CMYK. This may lead to darker colors in some PDF Viewers however. If your PDF should be printed on a separating workflow (e.g. newspaper ads) and contains CMYK colors just leave this option off as this will produce the best results. If your PDF has too dark colors in a PDF Viewer or is destined for pure office work or web display turn this option on, it will also diminish file size of the PDF result a bit. The output size will

also become smaller since three color values takes less space than four.

PDF output converted to Gray [default: off]

Command line option: -B

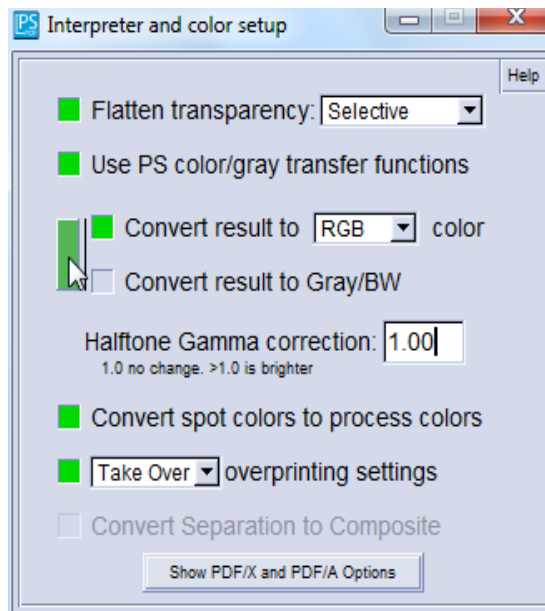
This option will cause PStill to emit B/W results only. All color values are recalculated to grays. The output size will also become smaller since the data can usually be much better compressed (if you have flate compression turned on).

Convert spot colors to process [default: on]

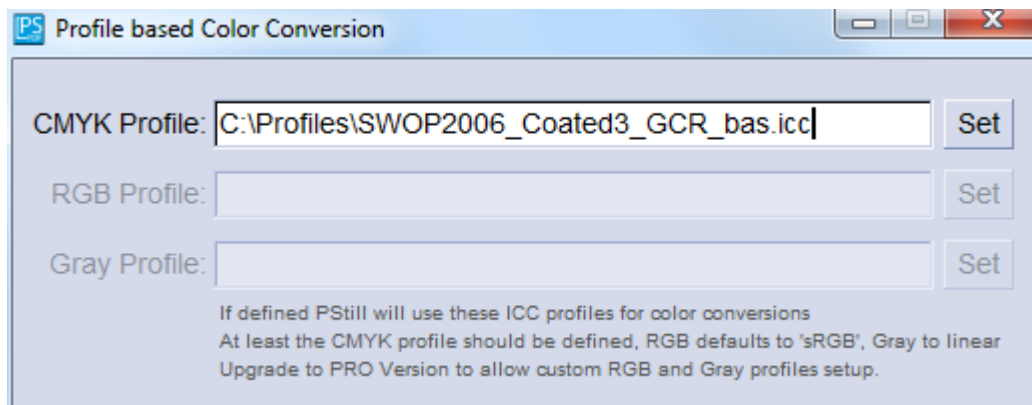
Command line option: turn off with -m Xspot (will cause spot colors to be written as spots)

This option will cause PStill to convert spot colors to their CMYK (or RGB/Gray depending on your setting of above options) process colors instead and have these written in the output. This is recommended for normal use, only PDF generated for pre-press purposes should use native spot colors.

ICC-based color correction: Check the small vertical button beside the color conversion options:



It will open the setup dialog for ICC color profiles for color space conversions:



Take over overprinting settings [default: off]

Command line option: `-m Xoverprint`

Overprinting are setup information that only have a meaningful context in a color separation environment. They specify if a graphical element should 'knock-out' (paint in white) on other color plates. This will prevent 'flashing' if the color plates are not positioned exactly for printing, however can lead to color problems if used incorrect. You cannot see overprinting in normal printout or on the screen! So enable this option only if you want to color separate the results and you know that the input job overprinting settings are correct.

Convert Separation to Composite [default: off]

Command line option: `-m Xseptocomp`

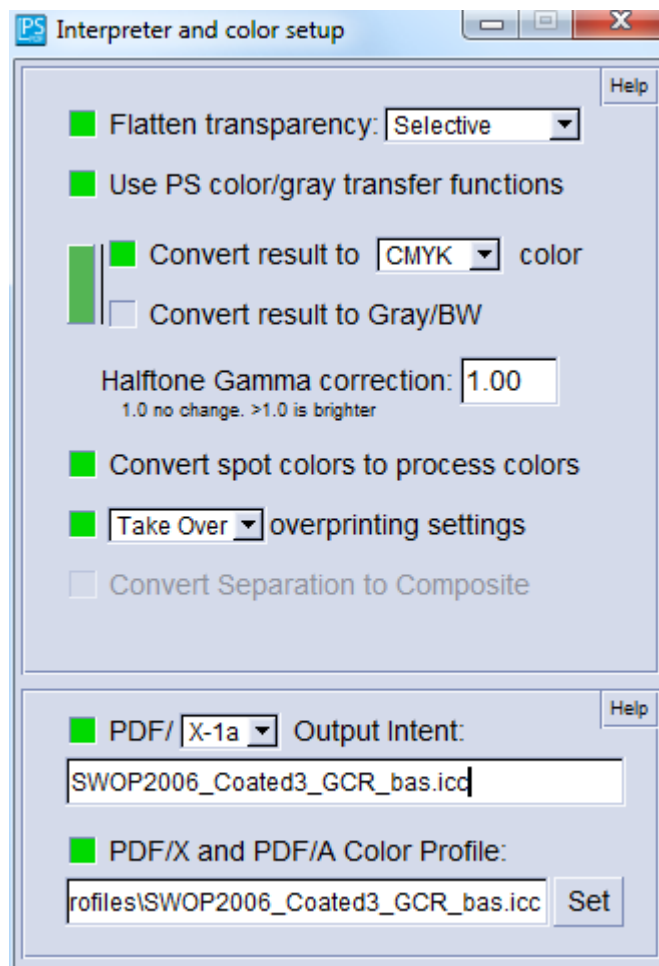
PStill can auto convert pre-separated PostScript input jobs to composite color results simulating the process of a printing machine. The results will be usable for e.g. Web or proof purposes. This option is only available if you have purchased the separate „S2C“-Option and the „septocomp“-module is installed.

Image gamma correction [default: 1.0 – no change]

Command line option: `-G #.#`, where #.# is the gamma value

PStill can apply „gamma“ correction to images in the output, making them darker or lighter in appearance. This option has only effect on raster images (gray/color), monochrome bit-level images and mask are not affected.

When you click on the lower button for PDF/X and PDF/A output the dialog expands



PDF/X & PDF/A Options:

Command line options: -m XPDFX="INTENT" -m XICCPProfile=path\to\profile -m
-m XPDFXVERSION=1A (optional, otherwise PDF/X-3)

PDF/X is a focused subset of PDF for 'secure' production of PDF.

PDF/A is for archiving PDF

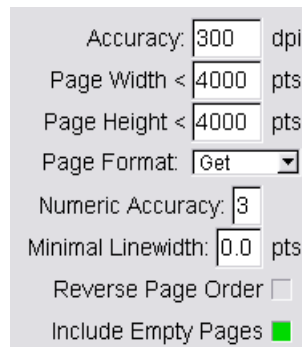
Please see the PDF/X info in GPStill and check out <http://www.pdfx.info>

This option is not needed for normal desktop/office work. If you need to submit PDFs for publishing purposes however it can become quite handy. Your publisher will tell you the values for the intent name / version and the color profile in this case.

Note: If you supply a color profile here, PStill will include it in the PDF result, but not use it otherwise (as per PDF/X spec.). If you want the color profile to be applied set it in the color profile dialog instead (to open click the small vertical button left of the CMYK/RGB option).

For PDF/A you may leave the intent and color profile fields empty. PStill will then default to sRGB.

In the main option windows you can find the page setup and output size options:

A screenshot of a software dialog box for page setup. It contains several input fields and checkboxes. The fields are: 'Accuracy' with a value of 300 and unit 'dpi'; 'Page Width <' with a value of 4000 and unit 'pts'; 'Page Height <' with a value of 4000 and unit 'pts'; 'Page Format' with a dropdown menu showing 'Get'; 'Numeric Accuracy' with a value of 3; 'Minimal Linewidth' with a value of 0.0 and unit 'pts'. There are two checkboxes at the bottom: 'Reverse Page Order' which is unchecked, and 'Include Empty Pages' which is checked (indicated by a green square).

Accuracy [default: 300 dpi]

Command line option: -d #, where # is between 72 and 1000

See also 'Compression setup' and 'reducing image density' for extended options

This is the internal accuracy PStill calculates any placement of elements with. It defines the device raster of the interpreter which is used to 'flatten' paths. The 'true' resolution is much higher, at least double this value.

300 is usually fine for normal office work, however if your PDF result shows

- slightly misplaced characters in text (usually horizontally by a tiny amount)
- contains high resolution graphics (e.g. CAD or fine artwork drawings)
- demands the best precision

Change to higher values, 400 dpi or 800 dpi are usually good choices. Please note PStill will need more memory for larger values and conversion time may increase a bit.

Note: For image conversions (to TIFF, JPEG, PNG) this setting defines the output raster density.

Page Width [default: 612 pts (US letter)]

Command line option: -w #, where # is the width in dpi (1/72 inch)

and

Page Height [default: 792 pts (US letter)]

Command line option: -h #, where # is the height in dpi (1/72 inch)

Here you can tell PStill how large you like to have the page size of the resulting PDF document. Any graphics outside this area will be clipped.

Page Format [default: letter]

Command line option: -F <format>, where <format> is a2-a5, letter or legal

Here you can tell PStill how large you like to have your page size by selecting a format directly, so you don't need to enter the width/height values yourself. If you choose 'job' here PStill will try to determine the page size from the contents of the input PostScript or EPS file. Please note that PStill can only make the width or height smaller in this case, so you need to provide an appropriate large enough size in this case, otherwise partial clipping will occur. Use Page Height /Width directly to select other formats!

Numeric accuracy [default: 3]

Command line option: -a #, where # is between 1 and 6

This setting determines the number of digits floating point values are written in the PDF result. '1' means '2+1' that is '3' digits behind the comma. You may want to change this setting to higher values if you experience slightly misplaced graphics under very high resolutions or for CAD work. Higher values will also cause slightly larger output files (because of the additional digits).

Note: This option will also define how accurate text elements are 'placed'. Low settings causes larger visual differences but smaller output size. For a setting of „1“ raster images are also rewritten for smaller output size. A setting of '3' is usually a good choice, lower values may cause slight variations in text placement.

Minimal Linewidth [default: 1.0]

Command line option: -l #.#, where #.# is between 0.0 and 100.0

Often the width of lines in PostScript is given wrongly as zero. These PostScript files display great on screen but when printed on a high resolution device the lines vanish completely. PDF has inherited this 'hairline' problem from PostScript. PStill will solve this by promoting too small lines to visible values. If you want PStill not change the line size set this to zero. Otherwise depending on your PDF needs values between 0.1 and 1.0 are fine. Higher values than 1.0 may cause strange effects.

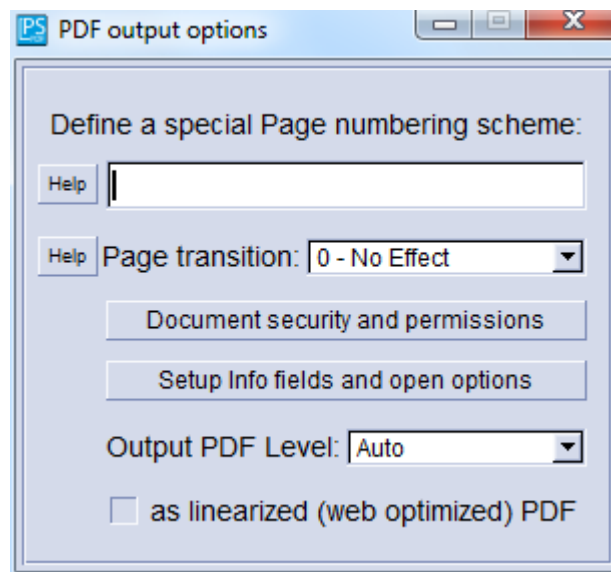
Reverse Page Order [default: off]

Command line option: -r

This will cause PStill to reorder the pages from back to front in the PDF result. Use this option if your input file is already reverse ordered.

PDF output options

Here you can select several PDF features, including encryption and permission:



Special page numbering scheme

PS still allows you to define either a starting page number to be used for display in a reader application or even a custom complex number scheme:

- a) To define a plain page numbering enter just a starting number
- b) To define a complex page numbering scheme enter the scheme as described in the PDF Reference 1.4 manual, Section 8.3.1
\"Page Labels\", e.g. a document with page labels:

i, ii, iii, iv, 1, 2, 3, A-8, A-9...

(Pages until 4 in roman numbering, from there until 7 in decimal, from there in Decimal using the Prefix 'A-' starting with 8...)

can be defined by entering into this field (start with '['):

```
[ 0 <</S /r>> 4 <</S /D>> 7 <</S /D /P (A-) /St 8>> ]
```

An uppercase roman numbering for all pages starting with page number 100 would be defined as

```
[ 0 <</S /R /St 100>> ]
```

The option values for each section in <<...>> are defined as

/S /R	uppercase roman numbers
/S /r	lowercase roman numbers
/S /D	decimal numbers
/S /A	uppercase letters (A-Z, then AA-ZZ, ...)
/S /a	lowercase letters (a-z, then aa-zz, ...)

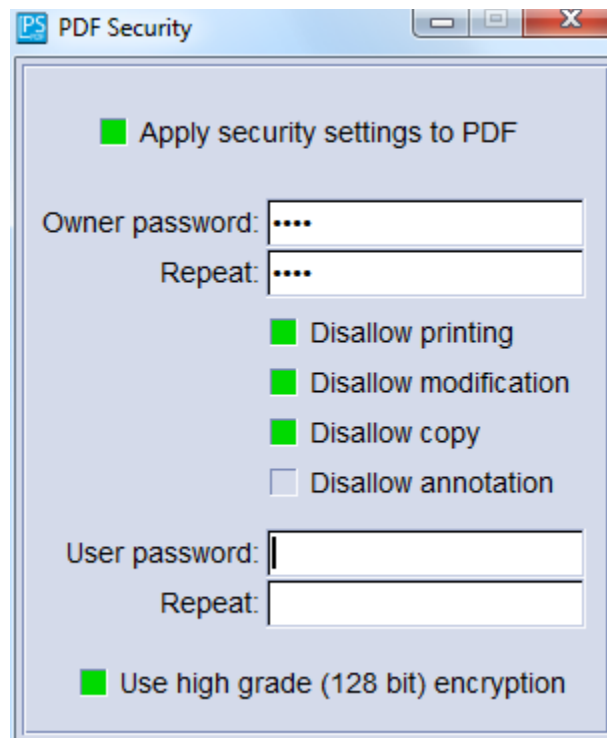
/P (Label) label to be prefixed to the number
/St # starting number (must be integer)

Check for closing >> for each opened << and don't forget the starting '[' and closing ']'.

Page transition

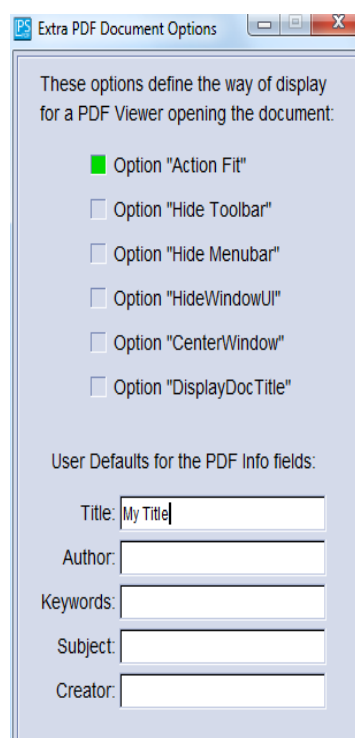
Can apply a page transition effect when shown in a PDF Reader (does not work in all viewers)

Document security and permissions



Define access and restrictions to the generated PDF.

Setup info fields and open options



Define the info section of a PDF output. Settings here will override job settings.

Output PDF Level:

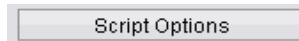
In Auto (default) mode PStill will write the lowest possible PDF level for a given task. As PDF levels are backward compatible this provides generally the best compatibility, also with older versions of a post-processing applications.

Otherwise you may set the desired output PDF level here.

When you turn on linearization PStill will also write the PDF result web-optimized. On the command line use option: `'-M linearize'`. This option has no effect for EPS/PS output.

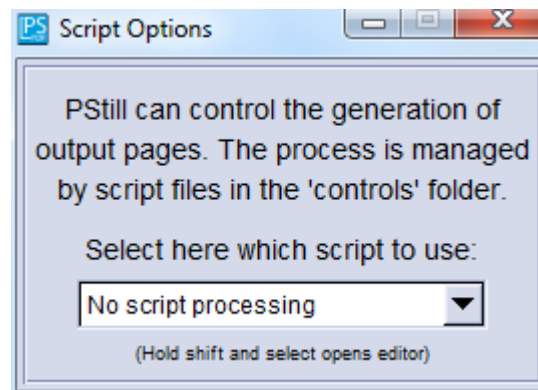
Control scripts

PStill can apply changes to the page (N-UP, stamping, poster conversion, etc.) using the script interface:



Command line option: -M pagecontrol=path\to\script.sl

This button opens a dialog that displays the available 'scripts' in the folder „controls“ inside the GPStill directory. Such a script defines the placement and scaling of pages on the result. Several scripts come with PStill, e.g. 2-on-1.sl:



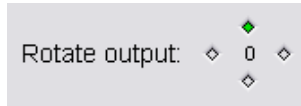
This option affects all input types, allowing to reorder an existing PDF or a set of images, output as Poster or other tricks. Please check the supplied collection of scripts for examples or the script repository at

<http://www.wizards.de/~frank/WP/ControlScripts>

To make a script available to PStill just copy it to the 'controls' directory in the PStill program folder.

There are a number of ready made scripts in the 'controls' folder. e.g. to provide N-UP output processing (many pages on one), poster output (one page to many), adding annotations, etc.

Page rotation and saving of current setups and their restoration:



Rotate Page (at the bottom, using the selectors for 0, 90, 180 and 270 default: 0)

Command line option: -R #, where # is either 0, 90, 180 or 270

(0 will cause PStill to use %%Orientation: DSC comment in the source, auto-detect rotation)

Will cause PStill to rotate the output. Use it to force landscape or portrait mode.

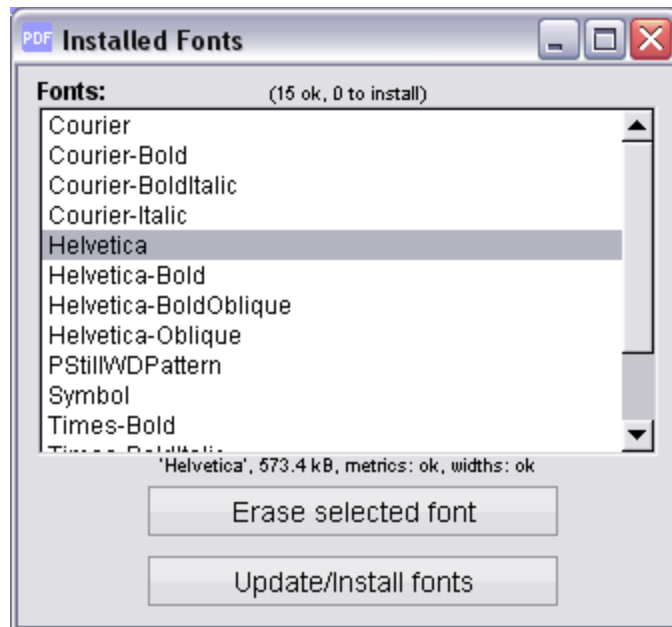
Setup [opens by clicking on 'Easy Setup']



The Setup button will open up the 'save' setup area. You can save all your defined options by name and load them later. This way you can simply 'return' to a complete setup without going through all dialogs.

ManageFonts [Button]

Command line option: -I, install only – usually used together with option -v as '-v -I'



Will cause PStill to display the current font pool and allows to check all installed fonts and regenerate the fonts metrics and widths table. A newly installed font (See next section) is only visible to PStill after you have choose this option and you have recalculated the metrics and widths tables.

Prepare to wait a few seconds, each font is run through the complete PS/PDF machinery and is subjected to a set of tests and rules to see if it checks out fine for PDF work. After completion see the PStill log ('Show Log' button) to see a list of installed and ready to use fonts.

For information about the 'Network Setup/Watch folder' see page 33 of this document.

Set PDF Viewer [Button]

Command line option: N/A

By default the 'Open Result' will open PDF with the system default application. You can define a different application for opening with this function. It will display a file selector dialog where you could define the opening program. E.g. for Acrobat(R) Reader[TM] 'AcroRd32.exe' may be used but any program that accepts a single PDF file as parameter on the command line program to cause this file to open or process (e.g. an automatic mail program, archiving system, printing tool or file repository).

Hint: More settings can made in the "Misconfiguration" file.

2.6 Show log

Enable the log out for the command line version using option -v (verbose)

Hint: GPStill will display the used 'command line' option list in the log. You can save the log to file by double-clicking in the log area.

All options correspond to the appropriate command option of the command lines version of PStill. See its section 4 to see how the options are used. The command line version has several additional features not accessible by the option dialog, however for most work the option list of GPStill will be sufficient.

PStill presents a detailed log for every conversion run. You will find a lot information about fonts, the PostScript conversion step, the PDF collection step and font embedding step and at the bottom if the conversion process produced any errors.

The sections that may be of particular interest are prefixed with

PS-Messages>

as these are the output of the PS interpreter step and any problems during the conversion and error codes will show here or a few lines above this section.

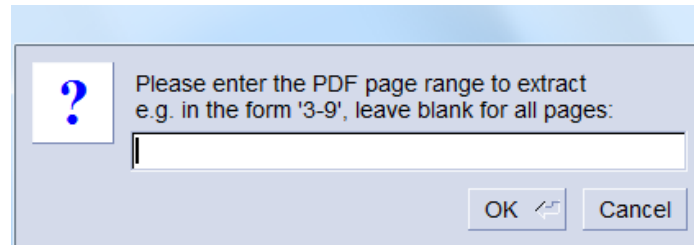
Also of interest may be the font inclusion step later as here a user can check if a font was included in full or partial (subsetted) and if any problems may have occurred concerning the font sets inside the PostScript file.

Errors and missing fonts are marked in **yellow** in the log display of GPStill.

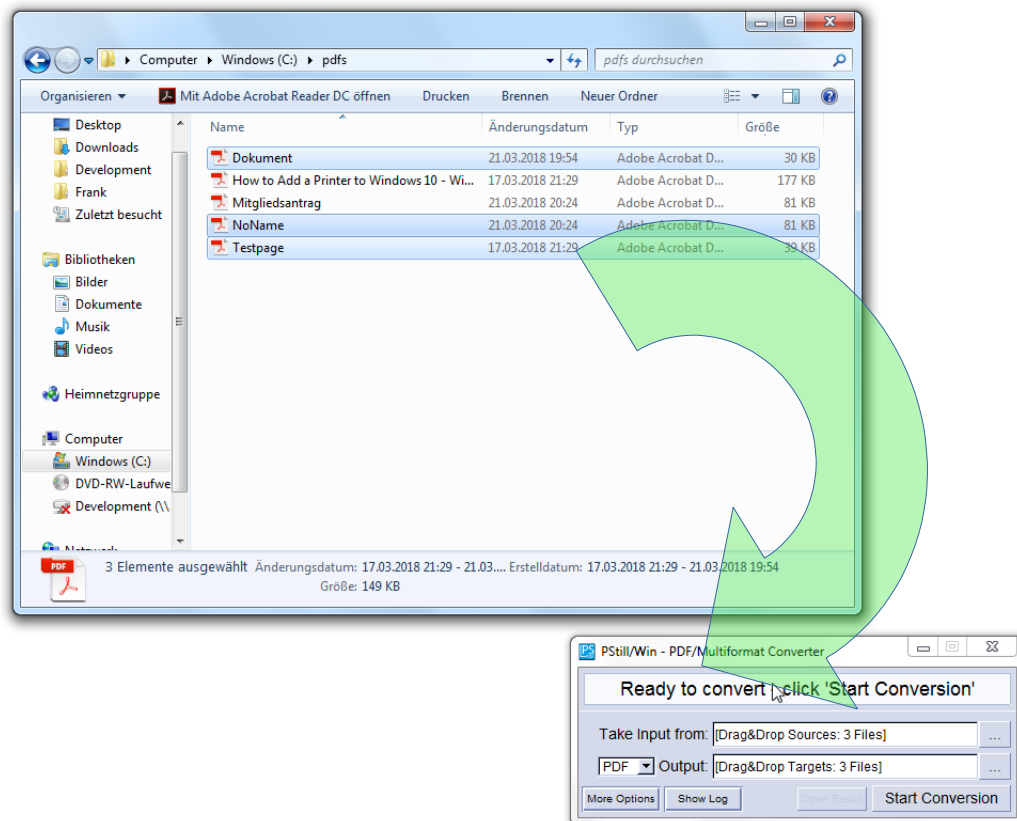
You can save the log to a text file, just click on the respective button at the bottom on the log window.

3.0 Converting single / multiple files

To convert a single file just drag&drop it on the PStill main window and start the conversion. When you hold the **left shift key** during the click on the 'start conversion' button a dialog opens that allows to select a page range for processing.

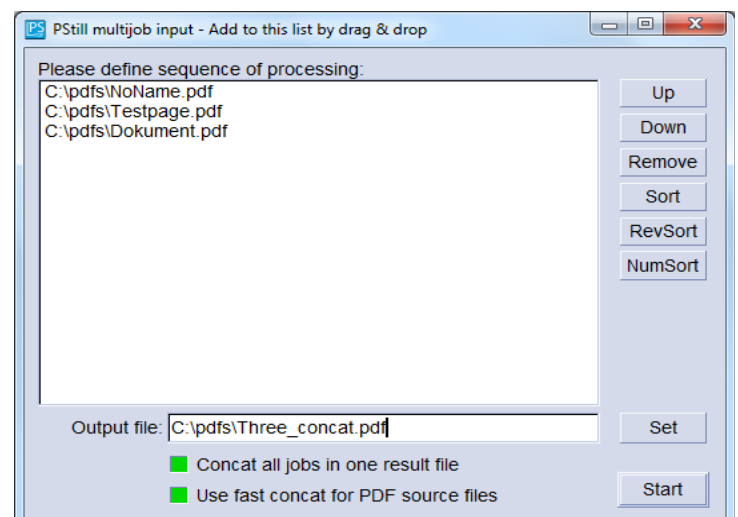


You may drag&drop single or multiple files on PStills window – all supported input formats can be mixed. In case of multiple files PStill will display a dialog that let you set the order of the input files for processing and allows to convert each single file separately or combine the input files to one PDF result or alternatively process each input file separately to a PDF.



You can change the destination by typing the complete path in the PDF output field.

Hint: Drag&drop more files on this window while it is open to add to the list.



3.1 Installation of fonts

Command line users should copy the files to the PSFonts folder and run 'pstll -v -I'

To install new fonts just select the font files - usually files with the postfix '.pfb' or '.pfa' - and drag them to the PStill main window. PStill will automatically identify them as fonts and place them in the PStill font pool, a folder called 'PSFonts' which resides inside the PStill installation folder. But still these fonts must be checked and their metric calculated. So remember to select 'Install New Fonts' in the options to make them known to PStill.

PStill accepts Type 1 (PFB or PFA format) and Type 3 (PFA format) PostScript fonts. If you have your fonts as TrueType (TTF) it will convert them to PostScript Type 1 first. Power users who can work the command line may use the supplied tool 'ttf2pt1.exe' which is placed by the installation process in the PStill program folder. See also the file 'makefonts.bat' on hints how to use this tool. Remember however 'ttf2pt1.exe' is only provided for convenience, you are using it and its results entirely at your own risk.

PStill can work with fonts embedded in the source, so font installation is not needed if the source contains them.

3.2 Creating input (PostScript and EPS) for PStill

PostScript isn't PostScript - each printer driver is free to write special commands, elements and other settings into a PostScript file, usually this process is controlled by the setup of the printer driver or the application setting in the case of EPS files. Here are the most suitable setup options:

To create PostScript for PStill please install a new printer in Windows and select the printer type manually:

On Windows XP:

„HP Color Laserjet PS“

or

„HP DesignJet 750C/PS“

On Windows Vista/Windows 7:

„HP Color Laserjet 2800 series PS“

or

„HP Color Laserjet 2550 PS“

On Windows 8 and 10:

„Samsung Color Laser PS Class Driver“

or

„KONICA MINOLTA PS Color Laser Class Driver“

or

„MS Publisher Color Printer driver“

or

„HP Color Laserjet 2800 series PS“ (from Windows update)

Either set the printer to “print to file” and manually convert the data by PStill or use the network server feature of PStill. In this case create a network printer to print to a TCP/IP port. The network card should be set to ‘Generic’ and the port setting to: TCP/IP Raw, port 9100 or setup as LPR protocol (with byte counting).

4.0 Command line usage

GPStill has a companion, a command line version for batch or embedded (calling from e.g. Visual Basic) work. It is called *'pstill.exe'* and resides in the PStill folder.

Attention: Do not use 'gpstill.exe' for this purpose, it does not understand the options and will not work in a scripted environment. It is meant for interactive use only!

To run pstill.exe now open a command shell and change to the PStill directory:

```
cd c:\programme\gpstill (may be different on your system!)
```

This step is not strictly needed, if you like to run pstill.exe from another directory you need to call it however with the full path, e.g.

```
c:\programme\gpstill\pstill.exe ...options to follow...
```

To get some help on the usage now type:

```
pstill -H | more
```

The "| more" is only needed to help you letting the text view as there is more than one page of information. To write the usage info to file type:

```
pstill -H > usage.txt
```

Now you can read the usage description and the list of possible options using your text editor of choice. As you can see options to pstill.exe must be given in the *NIX notation, that means a '-' starts an option, not a '/' like in the DOS world.

4.1 Example conversion using the Command line converter

To convert a PS or EPS file to PDF using the command line version use this call

```
pstill ...options... -o output.pdf input.ps
```

e.g.

```
pstill -M defaultall -o c:\pdf\report.pdf c:\psfiles\report.ps
```

To see what PStill is doing during conversion also add option -v, it causes the program to write the conversion log to stdout. You can easily place this log in a file of your choice using the 'pstill ...option.... > log.txt' redirection.

Return codes are based on the success of the program. 0 means no error occurred, otherwise see the appendix for a list of error codes.

You may also place the command line completely in a text file and set it as input to pstill.exe:

```
pstill @c:\tmp\options_in_a_file.txt
```

For defining the output name PStill needs the option -o 'path' be given before the PS input file is defined. If you do not specify the output name PStill is using 'out.pdf' instead.

4.2 Output name specification using macros

To make processing easier the following macros may be used in the output file name:

@TITLE@	this will be the contents of the %%Title: ... comment in the PostScript input job, usually the name of the document as created by an application. If this comment is not found PStill defaults to 'tmp-xxxxx', where xxxxx is a number (the process id pstill runs at)
@SNAME@	the file name of the input, stripped of the path and postfix, e.g. if the input is 'c:\tmp\input.ps' @SNAME@ will result in 'input'. <i>Does not work with STDIN input!</i>
@LNAME@	the file name of the input, stripped of the postfix only, e.g. if the input is 'c:\tmp\input.ps' @LNAME@ will result in 'c:\tmp\input'. <i>Does not work with STDIN input!</i>
@TEMP@	the system temp folder
@ENVTEMP@	the value of the %TEMP% environment variable

You can use these macros quite handily in a bat script:

```
c:\...fullpath...\pstill.exe ... -o c:\out\@SNAME@.pdf c:\tmp\input.ps
```

On *NIX you can use the 'basename' shell extension instead.

4.3 Allow input from Standard In (stdin)

To allow the use of PStill as a 'filter', e.g. in connection with a third party driver (see

<http://www.wizards.de/~frank/WP/>

for more info) the command line version allows the use of the special input name 'STDIN'. Usage is like

```
c:\programme\gpstill\pstill.exe ... -o c:\output\pdf\output.pdf STDIN
```

PStill then collect the data and waits for the EOF then starts processing.

4.4 Combine several files in one result

If you specify more than one input file on the command line, PStill will concatenate them together in one PDF output file, e.g.

```
pstill ...options... -o output.pdf input1 input2 input3
```

will result in one PDF file called output.pdf containing the page from input1 until input3 in that order. You can also mix different inputs types.

Alternatively you may want to convert all to PDF first and then concat with 'pdfasm.exe' (part of PStill, see the program directory)

```
pdfasm output.pdf input1.pdf input2.pdf ...
```

4.5 Convert several files

PStill does not support the '*' wildcard for file selection. This stems from its *NIX heritage where the shell does all wildcard processing. However there is an easy way to convert a batch of files on Windows, just use a BAT script alike:

(name this *convert.bat* or similar)

```
@echo off
rem setup where to find pstill:
set pst=c:\programme\gpstill
set in=d:\tmp\pstill_in
set out=d:\tmp\pstill_out
echo Starting PDF conversion loop for %in%, results in %out%
pause
:loop
    echo Checking source directory...
    for %%f in (%in%\*.ps) do call single.bat %%f %out%
    echo Waiting 30 seconds...
    rem use sleep.exe from e.g. http://unxutils.sourceforge.net/
    sleep 30
goto loop
```

and to convert a single file use this BAT-Script as template:

(name this *single.bat* or similar)

```
@echo off
set pstillpath=c:\program files\gpstill
set pstilloptions=-v -c -c -c -g -i -p -t -J 60
if .%1==. goto FAIL
if .%2==. goto FAIL
%pstillpath%\pstill.exe %pstilloptions% -o %2\@TITLE@.pdf %1
rem you might want to uncomment the following line to erase the input
rem del %1
goto END
:FAIL
echo Script needs two options: inputfile and output directory
:END
```

These scripts are only templates, pstill can also be run from other environments like 'Perl' or 'Visual Basic Scripting Host'.

4.6 PostScript flattening mode (PostScript to PostScript processing)

PStill allows not only to write to PDF but to a normalized PostScript format that will only use a handful well defined PostScript command and has a standard coordinate system as base. This mode can be quite helpful in several cases:

- You have a PS file but you need a placeable EPS file
- You need to post-process PostScript files, e.g. to enter field values, pages or watermarks
- You want to sanitize a PostScript file (remove unneeded elements and make sure it works later in a PS interpreter)
- You need to provide PS files to others but only with subsetted fonts
- You need to import text, vector, graphics and raster images for PS or EPS files into another program or convert them to another format - just parse the results of PStill

Options:

- m Prewrite to produce a normalized PS file suitable for prepress work
- m Erewrite to produce a normalized EPS file suitable for prepress work

Note: The generation of EPS and PS needs a PSRW-type license.

5. Helper files and user configurable elements

Some file in the PStill distribution can be configured to improve conversion quality and to implement special behavior.

***Attention:** We are now moving on high ground, this section is not meant for the mere user of PStill, some understanding of script programming or fonts should be in your backpack. Make backups of the files in question before changing them and test your changes before putting them into production.*

5.1 Configuration file 'fontsub.table', located in the PStill folder

This file controls what font is used if a font is called by the interpreter. You can think of it as font replacement table. Its internal syntax is PostScript. By default it is empty and only contains comment lines, that are lines starting with '%'.

To define a mapping enter a line like

```
[ /Arial /Helvetica ]
```

Above line tells PStill to use the font with the PostScript name 'Helvetica' every time the font 'Arial' is called. Remember we don't use the PFB font file name here as it is artificial shorted for PFB formatted font files. To find out the real PostScript name of a font just import it into PStill and look in the folder 'PSFonts' after metric calculation has taken place. PStill will automatically rename the font to its 'true' name.

You can define up to 65535 mappings, just put every single one on a new line.

There are some caveats on using a mapping however:

1. A mapping does not change the text widths as defined in the PostScript job, that means is is now possible text flow is distorted since the new font has a different glyph width than the old. Be sure to map only fonts that have similar or identical widths.
2. A 'mapped' font is always included in the PDF output if it is not part of the base font set. PStill determines this by looking up the name of the font after the mapping has taken place. So if you use a replacement font instead of e.g. Helvetica or Times-Roman it will most likely be included in the PDF result and the PDF grows in size.
3. The base font "Courier" cannot be mapped using above method. It must be available under its name all the time. This does not apply to its variants like "Courier-Bold" etc.
4. Every single font variant must be covered. That means for e.g. Helvetica you need to define a mapping for 'Helvetica', 'Helvetica-Bold', 'Helvetica-Oblique' and 'Helvetica-BoldOblique' to cover the complete font family.
5. The font names are case sensitive and must start with a '/' character
6. PStill will tell you in its *PS-Message*> ... log section what fonts are not found so you can use this as a reference to setup this table.

5.2 Configuration file 'annots.sl' located in the PStill folder and control scripts

These files is a S-Lang (see <http://www.s-lang.org> for the language description) script file that controls the conversion of annotations (also called 'pdfmarks') from their PostScript form to the PDF form. The syntax of the language is a lot like 'C' with pieces of 'Forth' thrown in for good measure.

Every time the PDF backend sees an annotation it will process it as for each single key/value pair and call up the S-Lang function 'action_pdfmark' with two parameters:
The string value of the current key/value pair and a number as a counter.

e.g. The following mark in PostScript

```
[ /Rect [ 145 210 332 228 ] /Color [1 0 0]  
/Action << /S /URI /URI (http://www.this.net/~frank) >>  
/Subtype /Link /ANN pdfmark
```

Will cause action_pdfmark to be called with

```
/ANN  
/Subtype /Link  
/Action << /S /URI /URI (http://www.this.net/~frank) >>  
/Color [1 0 0]  
/Rect [ 145 210 332 228 ]  
<empty string>
```

The script can now work on the single annotations key/values and is responsible to collect all pairs into a single string to be returned to the PDF backend for embedding into the PDF result.

For this purpose three utility functions exists:

objToAnnotation(int pagenumber, string annotation);

Will place the annotation on the defined page (absolute page numbering required)

objToOutline(annotstring);

Will define an new outline entry

objToName(annotstring);

Will define a named destination

As the script has full control over the contents and the script language allows also file i/o it could be used for quite some nice effects:

- Automatically write a list of annotations in the PDF in a file during conversion
- Reencode the text (e.g. change 'öäü' characters to make them visible to a viewer)
- programmatically create annotations without the need to place them in the PostScript source

Before changing this script please build up some knowledge about the use and syntax of S-Lang. A

single error in the script would cause the conversion engine to abort with an S-Lang error.

More info on S-Lang is available on its web page: <http://www.s-lang.org>

All N-Up scripts are also written in the S-Lang language. You can find them in the directory 'controls' in the GPStill folder. They define the function:

```
pdf_page_setup(pagenum)
```

which is called by the PDF generator to setup the placement of pages. The parameters supplied is the current page number. The script can then change the page setup by calling

```
setupPage ( float translate_x, float translate_y, float rotate,  
            float scale_x, float scale_y, int keepOnSamePage )
```

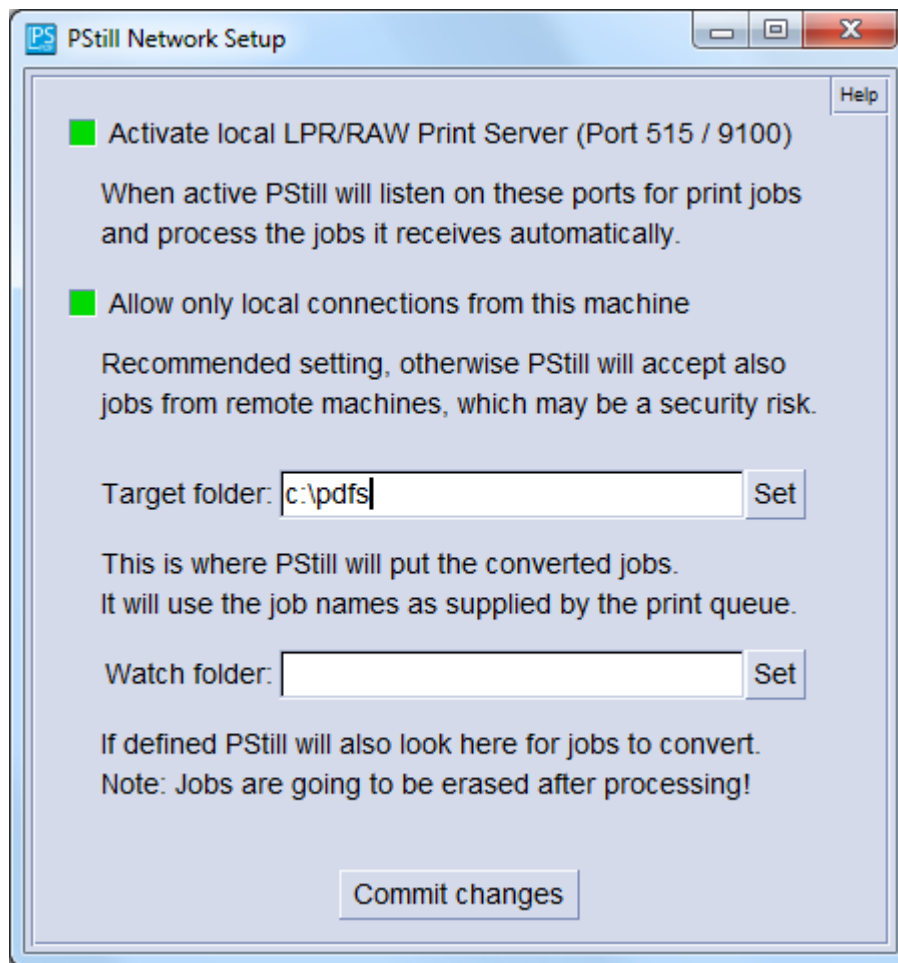
All translate values are given in pts, rotation in degrees. Be advised to consult the supplied examples for some deeper insight. You can also experiment, any error in the scripts will be reported to the log.

For more info about the S-Lang scripting language see <http://www.s-lang.org>

Setup a Windows printer to print directly to PStill locally or using the Network Printing Facility.

Using the network printing PStill is able to work as a PDF printer. (locally and over the network). All Windows application can print to and PStill will convert the jobs to PDF and place them in the target directory, correctly named and versioned.

For GPStill you need to activate the Network print server, select “Network setup/Watch folder” in the main options. Select the target folder. Jobs will be generated there. You need to click “Commit changes” to activate the server facilities. The Windows firewall may ask you at this point to allow GPStill network access.



Hint: More settings for logging / queue handling can be made in the “PStillConfig.inf” file in the PStill program folder. You can also define post-processing for received and converted data files there.

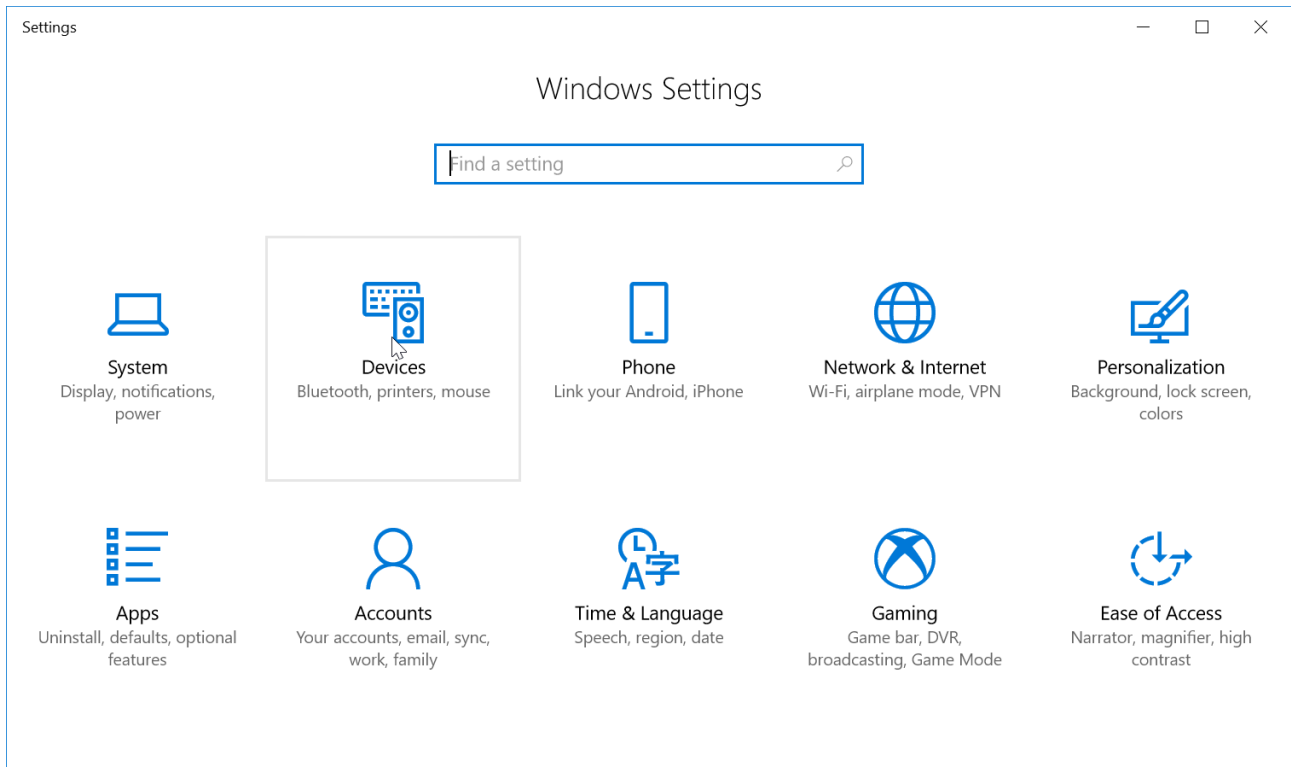
Security considerations: When enabled “GPStill.exe” will listen on TCP port 515 and TCP port 9100 for jobs. The Windows firewall may ask you to provide access (which should be granted if you want GPStill to receive jobs). There is no user access control as both protocols (LPR and Raw) do not define anything in this regard.

The network server functionality is only available for the GUI version “GPStill”. The command line version “pstill.exe” does not access the network.

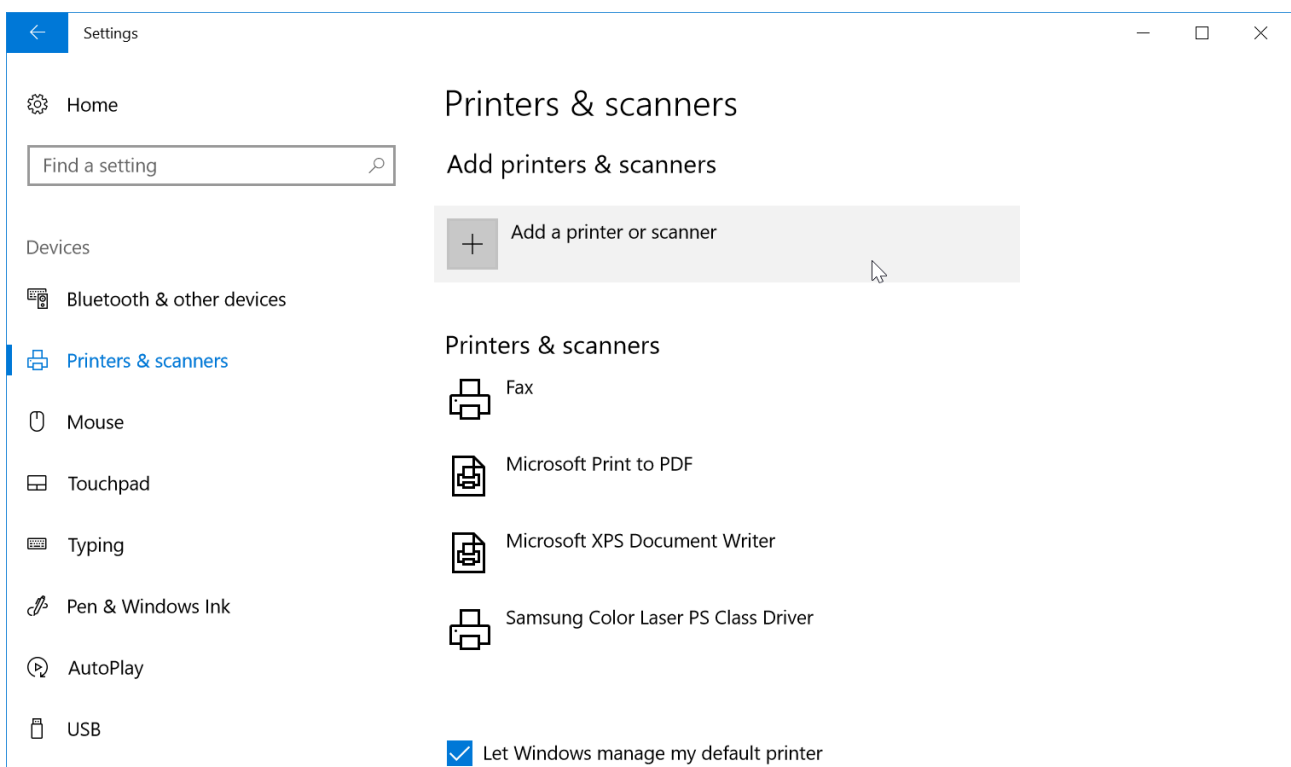
On Windows 7/8/10 you can create networked printer for a TCP/IP Raw port or LPR port.

Here is the walk-through process for Windows 10 (Fall Creator 2017) shown:

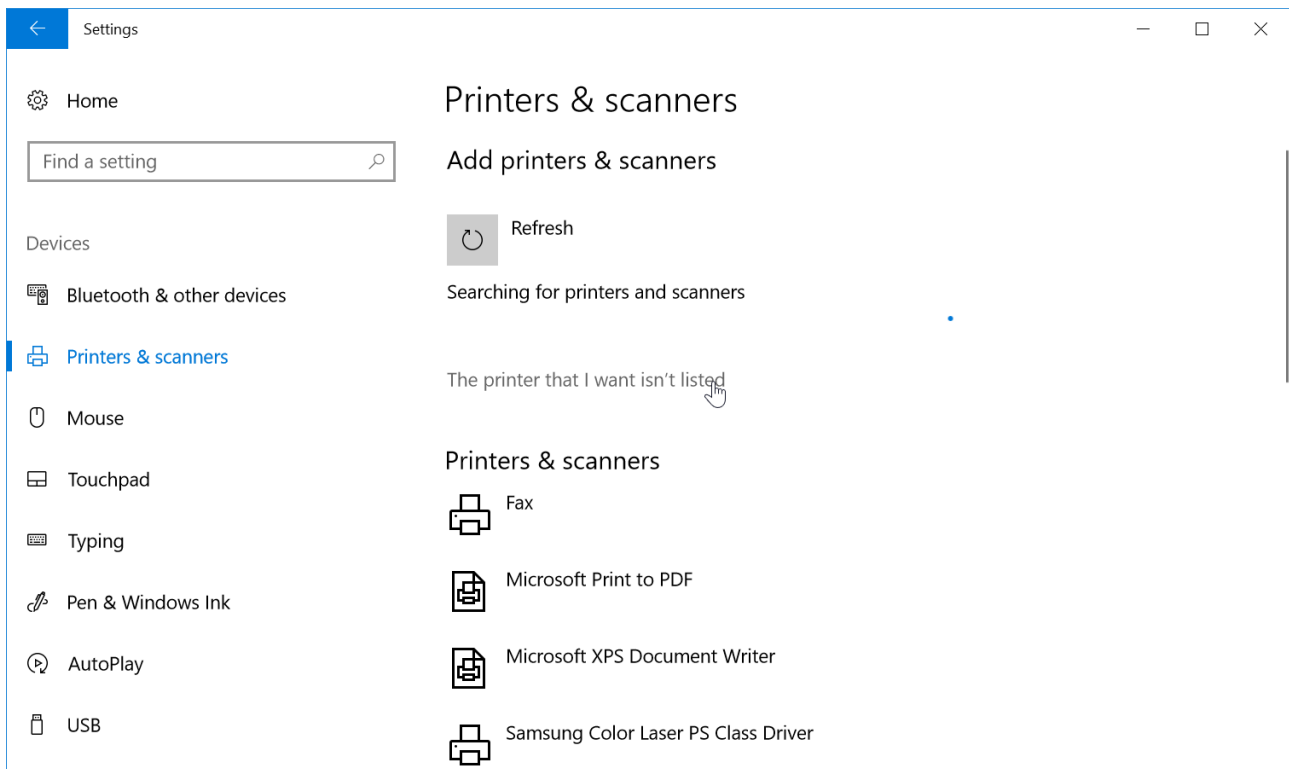
1. Open Settings, select Devices:



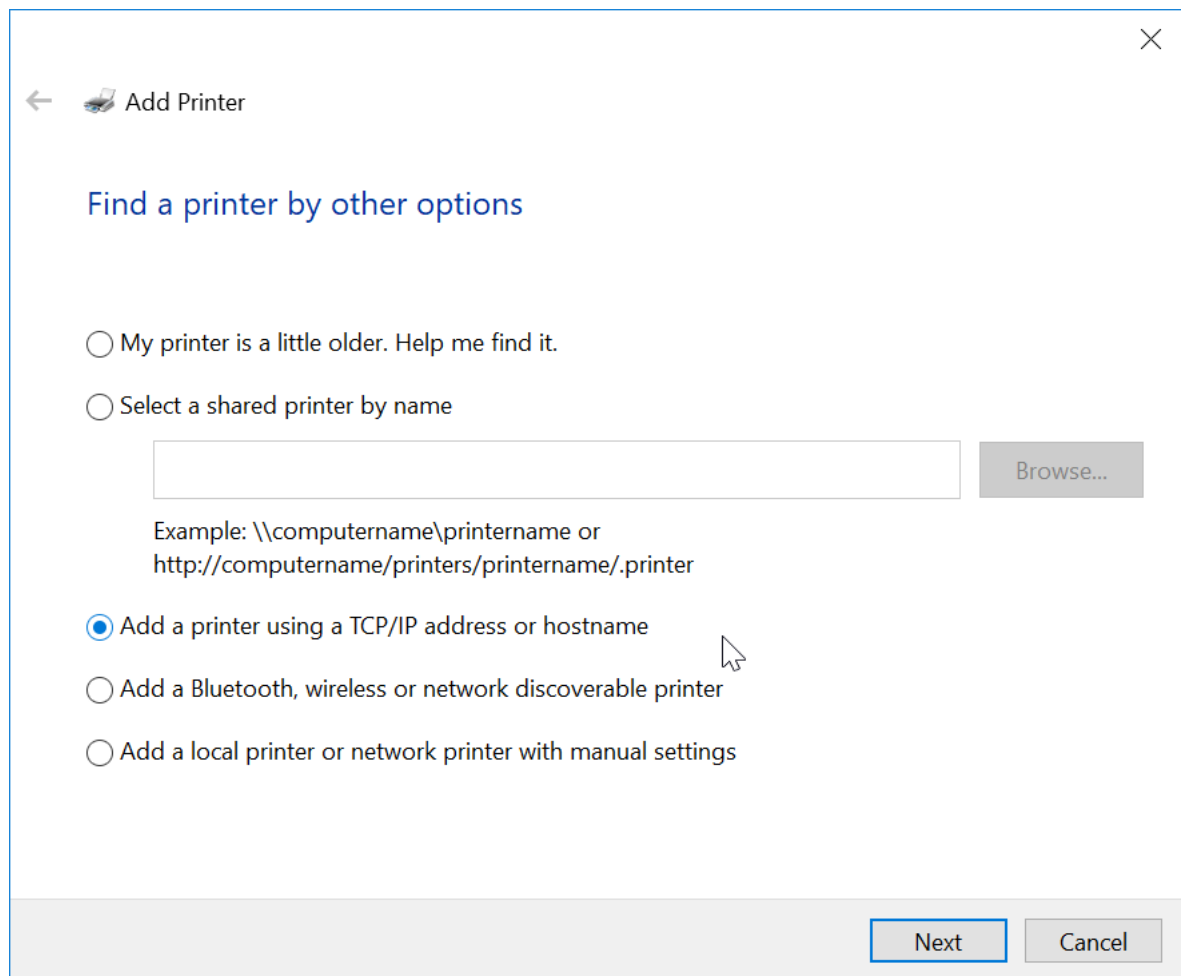
2. Select “Printers & scanners”, click on “Add a printer or scanner”:




3. Windows will now search for printers, but it won't find any. As soon as it becomes selectable click on "The printer that I want isn't listed".



4. In the new dialog select “Add a printer using a TCP/IP address or hostname” and click “next”:



The image shows a Windows 'Add Printer' dialog box. At the top left, there is a back arrow and a printer icon followed by the text 'Add Printer'. In the top right corner is a close button (X). Below the title bar, the text 'Find a printer by other options' is displayed in blue. There are four radio button options: 'My printer is a little older. Help me find it.', 'Select a shared printer by name', 'Add a printer using a TCP/IP address or hostname' (which is selected), and 'Add a Bluetooth, wireless or network discoverable printer'. Below the 'Select a shared printer by name' option is a text input field and a 'Browse...' button. Below the input field, an example path is shown: 'Example: \\computername\printername or http://computername/printers/printername/.printer'. At the bottom right, there are 'Next' and 'Cancel' buttons.

←  Add Printer

Find a printer by other options

☐ My printer is a little older. Help me find it.

☐ Select a shared printer by name

Browse...

Example: \\computername\printername or
http://computername/printers/printername/.printer

☒ Add a printer using a TCP/IP address or hostname

☐ Add a Bluetooth, wireless or network discoverable printer

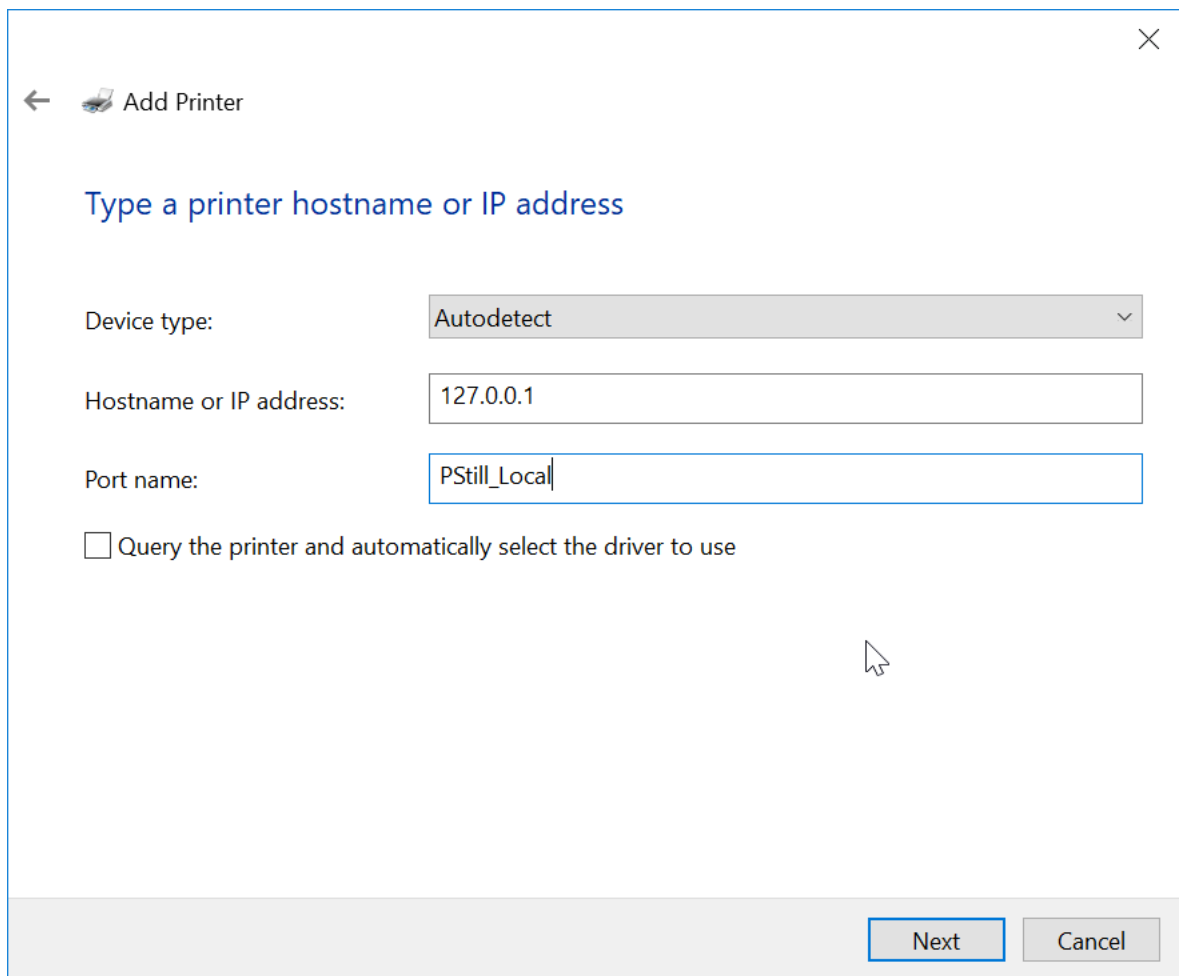
☐ Add a local printer or network printer with manual settings

Next Cancel

5. Now enter the target network IP (IPv4) address or hostname and a port name.

- To access GPStill on the local machine enter “127.0.0.1” as address.
- To access GPStill on another machine in your network, enter either its IPv4 address or hostname.
- For port name select a short name of your choice, e.g. “Pstill_local” for the local connection. Any name will do as long as it is not yet used on the system.
- Do not select “Query the printer and automatically select the driver to use”, instead select the driver in the next step.

Now press “Next”:



← Add Printer

Type a printer hostname or IP address

Device type: Autodetect

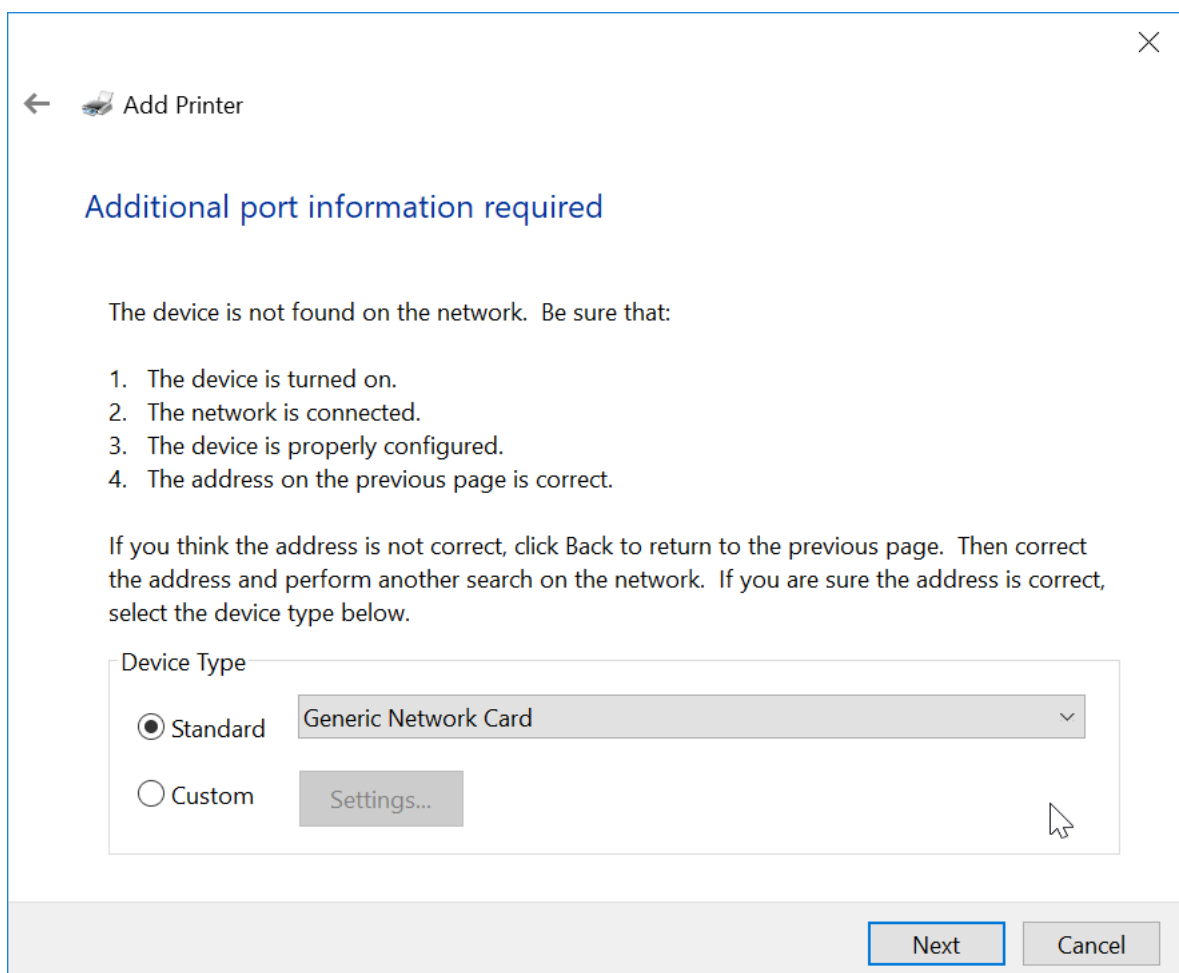
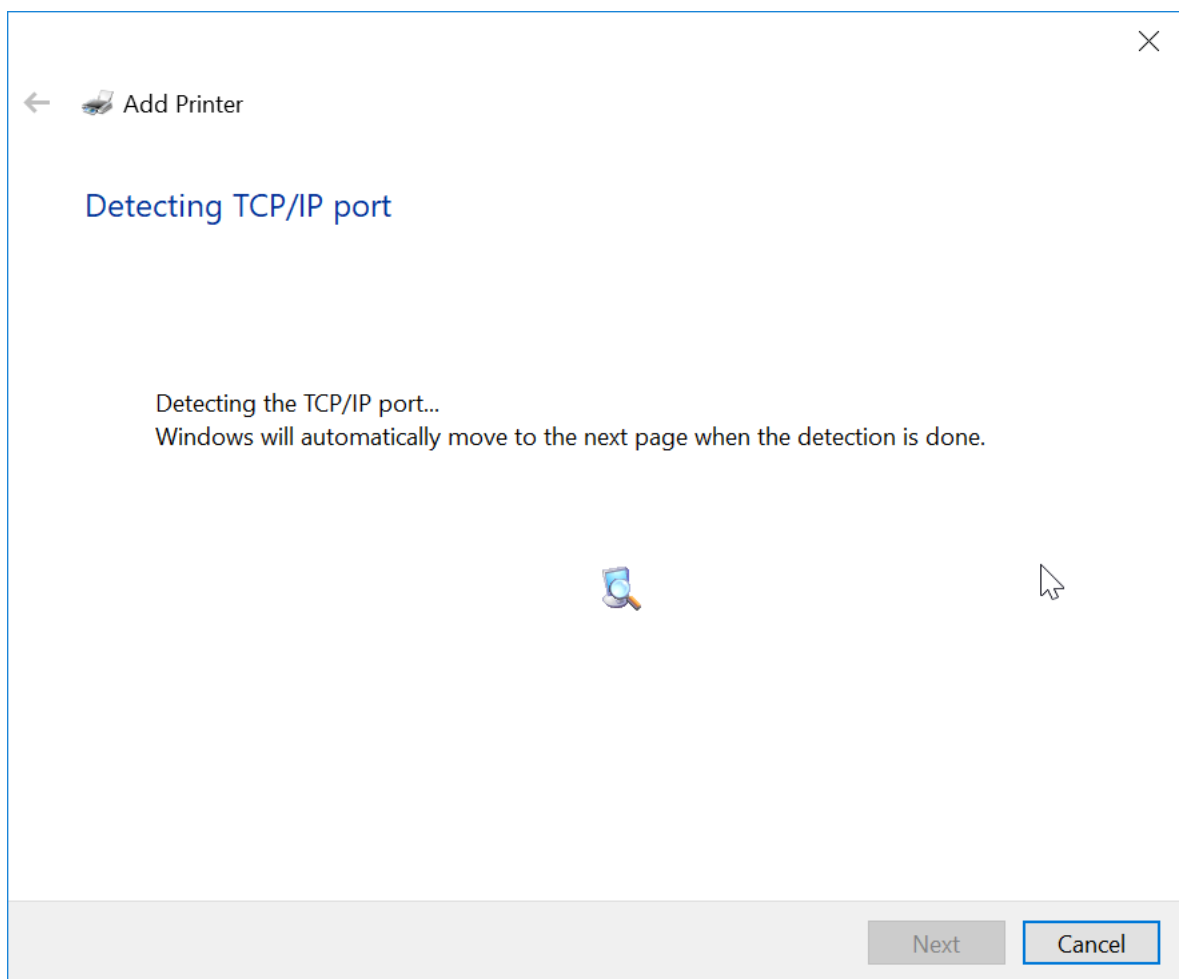
Hostname or IP address: 127.0.0.1

Port name: PStill_Local

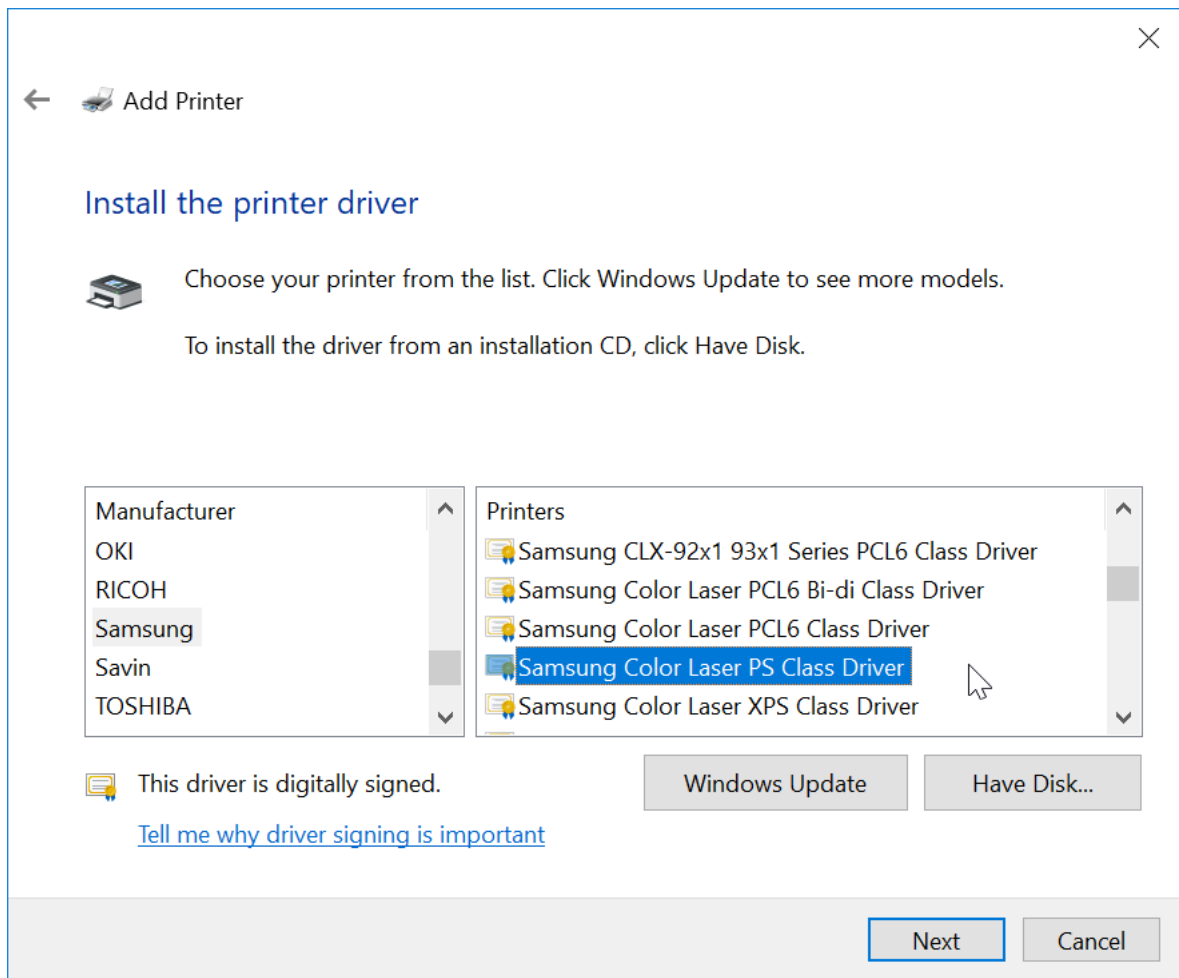
☐ Query the printer and automatically select the driver to use

Next Cancel

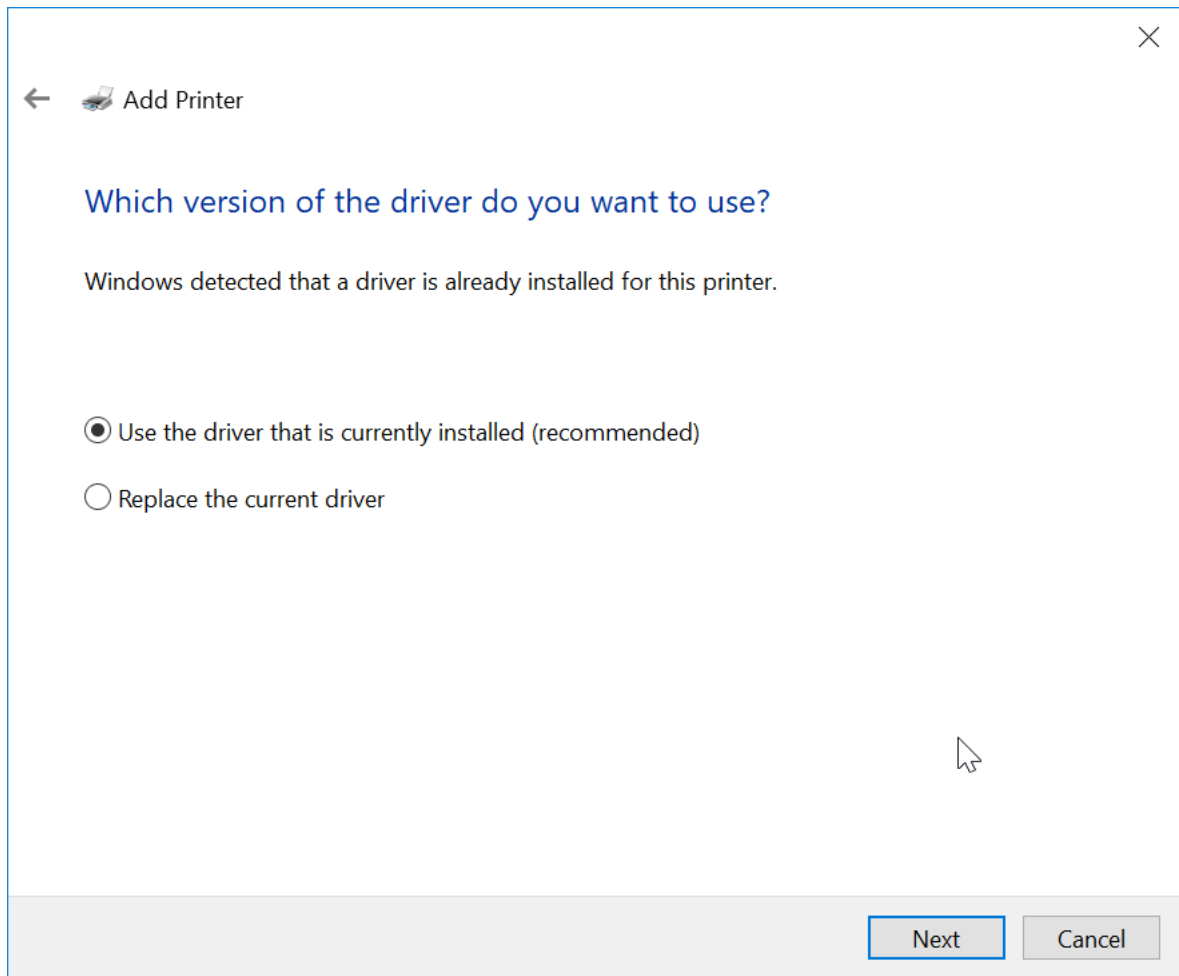
6. Windows will now try to query the connection— just wait a moment. Then select Device Type ‘Standard’ and ‘Generic Network Card’, click “Next”.





7. Now you need to tell Windows which printer type to use. Select the recommended type as shown below or from the list in section 3.2. Then click 'Next'.



8. In case Windows ask you which version to use just use the installed printer driver version, click “Next”. Do not share the printer, click “Next”, when asked for a name just enter “PStill” (or any other name of your choice)



Usually you do not want to share the printer.

  Add Printer ✕

Printer Sharing

If you want to share this printer, you must provide a share name. You can use the suggested name or type a new one. The share name will be visible to other network users.


☒ Do not share this printer

☐ Share this printer so that others on your network can find and use it

Share name:

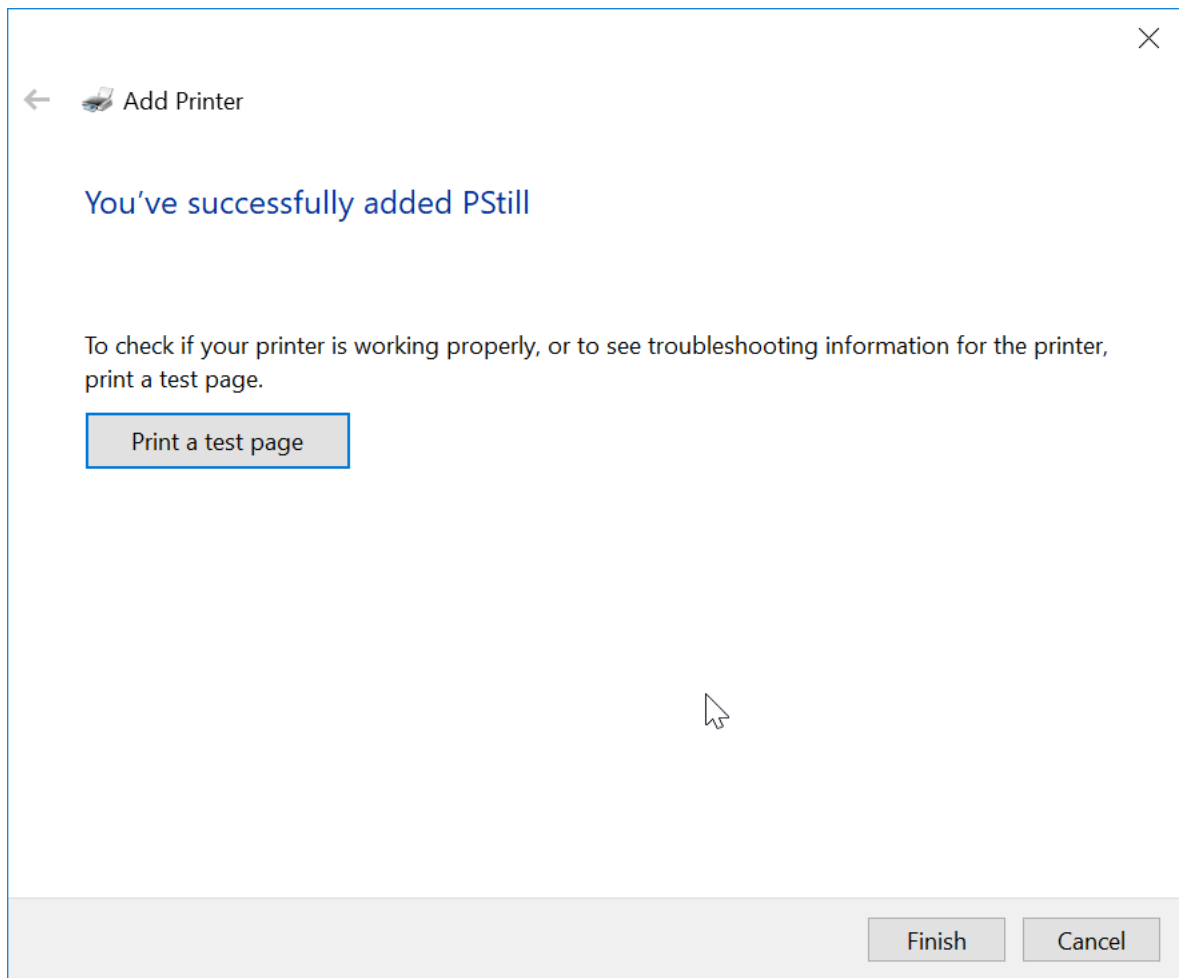
Location:

Comment:



Next Cancel

9. You are now ready, if you want print a test page. It will be sent to GPStil, either locally or over the network.



Hints and Troubleshooting the network:

- GPStil will tell in its log right after start up if it is able to establish to 'listen' to the network.
- If LPR or Raw does not work for listen its possible Windows will hold that port, this can happen on Windows Server when it acts as a print server itself – listening to a TCP port is exclusive, only one application can do it. In that case either disable the Windows print server facilities or run GPStil on a different machine.
- If you can not send by Raw try switching the port to 'LPR'
- LPR must be used with the 'enable byte counting' option of Windows turned on. It won't connect without this option enabled!
- Be sure to use a supported print driver type.

- You can use the command line utility 'rawsend.exe' (included with PStill) to send files to GPStill locally or over the network. It will receive and process such files as if they were send as print job:

```
rawsend hostname-or-IP filename
```

Rawsend not only sends plain PostScript files, it also allows to send any supported file type (PS/EPS, PDF, JPEG, TIFF, PNG, BMP to GPStill.

Especially for the non-Postscript formats (which do not contain job title information in the form of the DSC-comment %%Title: ...) you can include a jobname with the file, GPStill will use it to name the output:

```
rawsend -j jobname hostname-or-IP filename
```

Note: Rawsend always send 'Raw' to port 9100 of the host you specify, it does not use the LPR protocol. The host may be anywhere on the internet. It currently only accepts IPv4 addresses however.

- "LPR" provides more information to the server, e.g. user and client name and is recommend if these information are required for logging or post-processing.

- To get the IP address of the system GPStill runs on you can just type 'cmd' in the search window of Windows and open the command line shell. Then type 'ipconfig' – you will get a list of the network adapters in your system and their currently assigned IPv4 addresses.

- If you run in a LAN and your router assigns IP addresses automatically it is advisable to make the IP address of the system GPStill runs on 'permanent' – otherwise all your clients must be updated whenever its IP changes. Usually there is a setting in the router that allows that.

Setup network printing on *Windows 2000 and XP*:

- From **Start -> Settings -> Control Panel**, open **Network and Dial-up Connections**.
- From the **Advanced** file menu choose **Optional Networking Components...**
- Select **Other Network File and Print Services**, and choose **Details...**
- Check the box for **Print Services for Unix** and choose **OK** and **Next**.

PStill even accepts jobs from such old Windows versions as Windows NT or 98. On *Windows NT* click with the right mouse button on **Network Neighborhood**:

- From the menu that appears, select **Properties**.
- In the **Network** window that appears, click on the **Services** tab.
- Browse through the list of *Network Services*
- If **Microsoft TCP/IP Printing** is not listed, click on the **Add...** button.
- In the **Select Network Service** window, select **Microsoft TCP/IP Printing** from the list of Network Services.
- Click **OK**.

Add Printer Wizard

Local or Network Printer
Is the printer attached to your computer?

If the printer is directly attached to your computer, click Local printer. If it is attached to another computer, or directly to the network, click Network printer.

☒ Local printer
☐ Automatically detect and install my Plug and Play printer
☐ Network printer

Add Printer Wizard

Select the Printer Port
Computers communicate with printers through ports.

Select the port you want your printer to use. If the port is not listed, you can create a new port.

☐ Use the following port:

Port	Description	Printer
LPT1:	Printer Port	
LPT2:	Printer Port	
LPT3:	Printer Port	
COM1:	Serial Port	
COM2:	Serial Port	
COM3:	Serial Port	

Note: Most computers use the LPT1: port to communicate with a local printer.

☒ Create a new port:
Type: LPR Port

< Back Next > Cancel

1. Install a printer port to allow to print to PStill

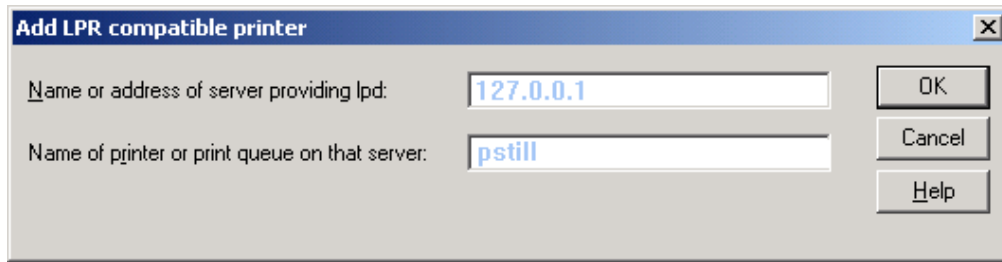
The setup on Windows 2000 is given as example, it is similar to Windows XP and Vista/7/8 only details of the dialogs differ slightly.

From **Start -> Settings -> Printers**, select **Add Printer**.

- From the „Add Printer Wizard“ window, choose **Next>**
- Choose **Local printer**.

- Select **Create a new port:** and **LPR Port**

- **Note:** If you have already installed a LPR port for PStill you may want to select this from the list of available ports instead! (See 'Use the following port:' list)



- Now enter 127.0.0.1 for the hostname/address and 'pstill' for the printer queue
- Now select the appropriate **Manufacturer** and **Printer model**, e.g. „HP“ and „HP Color Laserjet PS“
- When prompted to name your printer, enter a descriptive name and decide whether this should be the default printer. E.g. „PStill“ or „PDF Conversion“ makes sense here.
- In the **Printer Sharing** window, select: **Do not share this printer**
- This concludes the network setup. PStill should now be able to receive data as soon as you turn on the network option in the 'LPR Network Setup' dialog (see 'More Options'). If PStill does complain about being unable to establish the network services you may need to reboot once. This is due to the fact that initial installation of the „UNIX printing services“ on Windows seems to block TCP/IP port 515. This block is gone after a reboot.
- Before sending jobs to PStill your printer should be configured for best conversion results, see page 16 of this document on „Print Setup“.

6. Technical Appendix

PDF Reader programs

Some links to PDF reader and viewer programs can be found on the PStill web page:

<http://www.pstill.com>

These links are given for convenience and in the hope they provide useful but constitute no special support for these programs. The links lead to external sites out of the control of the author of PStill.

For PStill to convert the input job successfully it must match some criteria:

PStill contains a generic ("clone") PostScript interpreter. It must interpret the input job in order to gain knowledge about the data and visual display within. This interpretation process depends on certain criteria to be successful. You are advised to test your input jobs with PStill before putting the converter into a production chain to check the results. The input job must meet the following criteria:

-It must not contain commands that are undefined in PStill, e.g. it may not contain device specific PostScript that only exists for a given printer or output device) or Level 3 PostScript commands.

Attention: Use of undefined commands in the input job will cause a PostScript error and incomplete conversion!

-It must be created for a reasonable output device: e.g. on Microsoft Windows XP or newer: A suitable way to create PostScript files for use with PStill is to define a supported printer type, use the generic Windows PostScript driver set to download the printer fonts (default setting). To speed up processing you can set the True type download option to 'outline' but the default 'automatic' will also work.

Note: Use of an unsuited PostScript driver or settings for PostScript input job generation may cause PostScript errors or 'wrong' display and results.

Notes about conversion of text elements:

PStill will usually convert text (font usage) in the given input into suitable text elements in the output. However there are some cases where this cannot work.

- Font is missing:

PStill needs all PostScript fonts referenced by the input job in its "PSFonts" directory. If a font is missing both in the input job and in this directory "Courier" is replaced in the resulting output. Please note that PStill can only take over a font from within the input file to the output if they are marked with suitable DSC comments, as the extraction process depends on the comments to 'find' a font. It is therefore recommended to have all fonts available in your PSFonts directory that are needed for processing.

- Font is not embedded as text:

PStill cannot reconstruct text that is written as paths or bitmap, in this case the output contains the vector path or the bitmap of the font

- Font is unsuitable for embedding:

If a font is used that is build dynamically (glyphs are added during PS processing or the font structure is changed "on-the-fly" during PostScript processing) PStill is unable to take it over to the output. In this case it will write the text elements as paths. Also Type 3 PostScript fonts will be written as paths or bitmaps as these could use any PostScript command to paint themselves. This way PStill will always preserve the visual display of the input best as possible.

Notes about the processing environment:

PStill need a large area for creating its temporary files. By default this is the Windows Temp directory. You may change this directory with the option '-T path'. It is recommended to have at least triple (3x) the size of the input job for space here.

Note: If you run multiple instances of PStill each instance needs its own temporary directory! Otherwise the effects, results and output are undefined.

PStill Error codes (process return values)

The "pstill.exe" program will return these codes upon completion of a job. It is recommended to check these values in your own application or script. Please note that a value of 0 (noerror) does not indicate that really no error has occurred for all input jobs as PostScript programs are free to intercept error conditions on their own.

noerror	0	ok, no error to report
errdictfull	1	A directory was filled with too much entries
errdictstackoverflow	2	Too many directories open
errdictstackunderflow	3	Too many directories closed
errexecstackoverflow	4	Too long procedures found
errinterrupt	5	User interrupt
errinvalidaccess	6	Write access on a read only area
errinvalidexit	7	exit command without suitable environment
errinvalidfileaccess	8	file I/O error
errinvalidfont	9	font does not compute or is bad
errinvalidrestore	10	unable to restore
errinvalidstop	11	unable to stop (no suitable environment)
errioerror	12	general I/O error
errlimitcheck	13	a limit was reached (e.g. path too long)
ernocurrentpoint	14	no starting point defined
errrangecheck	15	a limit was reached (e.g. stringsize too short)
errstackoverflow	16	tried to put more than 5000 elements on the stack
errstackunderflow	17	tried to pop too much elements from the stack
errsyntaxerror	18	some command has a wrong syntax
errtimeout	19	job took too long (could not happen with psrip)
errtypecheck	20	a command got a wrong parameter
errundefined	21	an unknown command was found
errundefinedfilename	22	tried to access a non-existing file
errundefinedresult	23	tried to compute a non-existing result (div by zero)
errunmatchedmark	24	no mark was found but requested
errunregistered	25	no registration was found but requested
errVMerror	26	out of memory
errmemoryallocation	27	error during memory access or allocation
errkill	28	interpreter was killed due to signal
errmax	29	too many errors occurred (error handler was flooded)
syserr	>29	a system error has occurred during processing

If an error occurs the log may tell you where in the input file and some details if available.

Limits of the current interpreter version (valid for PStill 1.86+)

The interpreter used in PStill/PSRIP is a 'clone' interpreter for the PostScript[tm] page description language. PStill understands all Level 1, most of the Level 2 commands and some DisplayPostScript operators as defined in the Adobe PostScript Reference Manual [Second Edition]. The interpreter has some inherent limits a user job must not exceed:

max. number of fonts per job	10000	
max. path length		512000 elements
max. userdict storage		32768 elements
max. errordict storage		40 elements
max. local vm segments		254
max. local vm segment size	4 MByte	(for a total of 254 * 4096 kByte VM memory)
max. global vm area		16 MByte
max. memory allocation		2 GB (for 32 bit version), 8 GB (for 64 bit)
max. operand stack size		32767 elements
max. exec stack size		64000 elements
max. dict stack size		160 dictionaries deep
max. no of opened files		unlimited (by memory and system only)
max. string length		10240000 chars

Please note that the total job size may exceed this memory size by far as the job is processed and not stored during conversion. So the actual memory consumption of the PostScript job is usually not a function of its file size and can only be determined by e.g. running the PSCHECK product in log mode.

The known implementation limitations are as follows:

- Dictionaries are not expanded unlimited automatically for PStill (dictfull error possible), only to a size $(N + N/2 + 160)$ elements larger than the base set
- Some PostScript operators are emulated as functions and therefore reside in systemdict or userdict as functions not operators
- Some L3 additions are currently unimplemented or fall back to alternate color space
- setdistillerparams are not evaluated and have no effect
- CID font support for PS sources is implemented as conversion to Type 0

PSTILL COPYRIGHT NOTICE

PStill is a copyrighted work of Frank Siebert, 2016 All rights reserved.

PStill (c) Copyright Frank Siebert 1989-1992, 1996-2018, Alle Rechte vorbehalten

Contact information:

Dipl.-Ing. Frank Siebert
Stauferweg 35
72555 Metzingen
eMail frank@wizards.de
Office (Germany) (0)7123 15436
Office Fax (Germany) (0)7123 15463

PStill license

PStill is a copyrighted work and trademarked term ('word mark') of Dipl.-Ing. Frank Siegert, Germany. All rights reserved.

PStill is licensed - not sold. Usage and distribution is subject to the following conditions. If you do not accept these you may not use PStill.

Usage is subject to the following conditions:

- * You acknowledge the 'shareware' (try-before-buy) status of this software. Without valid license key you may only use it for evaluation purposes and it will create a watermark in the produced PDF files and writes an UNREGISTERED message in the PDF info section. For registration information see <http://www.pstill.com>.

- * Limited, non exclusive license: A valid license key allows you to remove the watermark restriction and to install and run the program on one system (incl. one backup system or home machine provided that this 'backup' installation is not used concurrently with the 'main' installation). PStill may also be installed on a file server however each client using PStill needs to be licensed separately. Updates up to version 1.99 are free and may be fetched from <http://www.pstill.com> as they become available. Different licensing terms and costs are available for site licenses, please inquire at frank@wizards.de.

- * You do not gain ownership of the PStill software. PStill is licensed not sold. All rights remain with the Dipl.-Ing. Frank Siegert. When you register you will receive the limited, non-exclusive rights to use PStill for the purpose of conversion of suitable input files to PDF and image file formats (PSRW license type also allows other file types) and to run and store the program on the licensed number of systems.

- * No modification or reverse engineering allowed. You may not try to disable the lock mechanism or distribute a 'hacked' version of PStill without license code or use a license code created by illegal means ('key generator').

- * An unlock code is confidential information. You must keep the license key confidential.

- * No bundling. PStill must not be bundled with any other product without written consent of Dipl.-Ing. Frank Siegert. Please send mail to 'frank@wizards.de' for more information and licensing information.

- * Evaluation use restricted. An unlicensed PStill must not be used in any production environment or for any commercial purpose nor may it be bundled with any commercial software package or distributed for money on media or the internet. Only the distribution of the unchanged PStill package free of charge is permitted provided no 'consulting fee' or 'download costs' are charged.

- * You are alone responsible for any copyright infringement the inclusion of font files („font embedding“) in generated pdf files might cause. You are advised to consult your font license agreement before distributing such pdfs files or use such font files.

- * You are using PStill entirely at your own risk:

FRANK SIEGERT DISCLAIMS ALL WARRANTIES WITH REGARD TO THIS SOFTWARE TO THE EXTEND POSSIBLE BY APPLICABLE LAW, INCLUDING ALL IMPLIED WARRANTIES OF MERCHANTABILITY AND FITNESS, IN NO EVENT SHALL FRANK SIEGERT BE LIABLE FOR ANY SPECIAL, INDIRECT OR CONSEQUENTIAL DAMAGES OR ANY DAMAGES WHATSOEVER RESULTING FROM LOSS OF USE, DATA OR PROFITS, WHETHER IN AN ACTION OF CONTRACT, NEGLIGENCE OR OTHER TORTIOUS ACTION, ARISING OUT OF OR IN CONNECTION WITH THE USE OR PERFORMANCE OR RESULTS OF THIS SOFTWARE. IN ANY CASE THE MAXIMUM LIABILITY IS LIMITED TO THE COST OF A SINGLE LICENSE.

You are advised to test the software before using its results. Due to the complexity of the task and possible setup and options variations no warranty or insurance can be given that every input job type will convert successfully. It is possible that some cases will not work or produce invalid output. No warranty can be given for the 'correctness' of the results.

To the best knowledge of Frank Siegert the software is free of copyright or IP claims of other third parties in Germany/EU. However since trademarks or patents are granted on a nation-based scale no guarantee can be given that the software is free of claims or its use and/or methods of working constitutes an infringement of third party rights in

your respective legal environment. You are responsible for any such infringement and you are advised to check if the use of this software infringes any IP claims in your particular legal environment before using or deploying this product.

PStill can use the local TrueType system fonts as templates for its base fonts, these fonts are renamed alike the Type 1 base fonts, their names are needed for the correct working of the PDF creation machinery as base font set. The trademark of the font names is still held by their respectful owners. The naming scheme is only used for identification purpose.

PStill can use strong encryption (40 and 128 bit) to 'secure' the PDF results. If your local laws do not allow usage of such encryption you may not use PStill. You are alone responsible to check your local legal environment before using or deploying this software.

* All names and symbols are used for identification purpose only. All trademarks belong to their respective owners. PostScript, Adobe, Acrobat, Distiller, PDF Logo, Acrobat Logo, PDF and others not mentioned here are trademarks or registered trademarks of Adobe Systems Incorporated. All other brand or product names are the trademarks or registered trademarks of their respective holders. PDF and the PDF list of operators and data structures are copyright Adobe Systems Incorporated. PStill was written according to the copyrights as outlined in the portable document format reference manual version 1.2, page 22/23. Thanks to Nullsoft for their free installer software.

Third party licenses of libraries used in PStill:

* Using ttf2pt1 (based on Version 3.22SNAP):

ttf2pt1 is Copyright (c) 1997-2002 by the AUTHORS:

Andrew Weeks <ccsaw@bath.ac.uk>

Frank M. Siegert <fms@this.net>

Mark Heath <mheath@netspace.net.au>

Thomas Henlich <thenlich@rcs.urz.tu-dresden.de>

Sergey Babkin <babkin@bellatlantic.net>, <sab123@hotmail.com>

Turgut Uyar <uyar@cs.itu.edu.tr>

Rihardas Hepas <rch@WriteMe.Com>

Szalay Tamas <tomek@elender.hu>

Johan Vromans <jvromans@squirrel.nl>

Petr Titera <P.Titera@sh.cvut.cz>

All rights reserved.

Redistribution and use in source and binary forms, with or without modification, are permitted provided that the following conditions are met:

1. Redistributions of source code must retain the above copyright notice, this list of conditions and the following disclaimer.
2. Redistributions in binary form must reproduce the above copyright notice, this list of conditions and the following disclaimer in the documentation and/or other materials provided with the distribution.
3. All advertising materials mentioning features or use of this software must display the following acknowledgement:
This product includes software developed by the TTF2PT1 Project and its contributors.

For the source code please refer to: <http://www.netspace.net.au/~mheath/ttf2pt1/>

TTF2PT1 IS PROVIDED BY THE AUTHORS AND CONTRIBUTORS ``AS IS" AND ANY EXPRESS OR IMPLIED WARRANTIES, INCLUDING, BUT NOT LIMITED TO, THE IMPLIED WARRANTIES OF MERCHANTABILITY AND FITNESS FOR A PARTICULAR PURPOSE ARE DISCLAIMED. IN NO EVENT SHALL THE AUTHORS OR CONTRIBUTORS BE LIABLE FOR ANY DIRECT, INDIRECT, INCIDENTAL, SPECIAL, EXEMPLARY, OR CONSEQUENTIAL DAMAGES (INCLUDING, BUT NOT LIMITED TO, PROCUREMENT OF SUBSTITUTE GOODS OR SERVICES; LOSS OF USE, DATA, OR PROFITS; OR BUSINESS INTERRUPTION) HOWEVER CAUSED AND ON ANY THEORY OF LIABILITY, WHETHER IN CONTRACT, STRICT LIABILITY, OR TORT (INCLUDING NEGLIGENCE OR OTHERWISE) ARISING IN ANY WAY OUT OF THE USE OF THIS SOFTWARE, EVEN IF ADVISED OF THE POSSIBILITY OF SUCH DAMAGE.

* This distribution makes use of LibTiff
* Copyright (C) Sam Leffler
* Copyright (c) 1988-1997 Sam Leffler
* Copyright (c) 1991-1997 Silicon Graphics, Inc.

*
* Permission to use, copy, modify, distribute, and sell this software and
* its documentation for any purpose is hereby granted without fee, provided
* that (i) the above copyright notices and this permission notice appear in
* all copies of the software and related documentation, and (ii) the names of
* Sam Leffler and Silicon Graphics may not be used in any advertising or
* publicity relating to the software without the specific, prior written
* permission of Sam Leffler and Silicon Graphics.

*
* The software is provided "as-is" and without warranty of any kind,
* express, implied or otherwise, including without limitation, any
* warranty of merchantability or fitness for a particular purpose.

*
* In no event shall Sam Leffler or Silicon Graphics be liable for
* any special, incidental, indirect or consequential damages of any kind,
* or any damages whatsoever resulting from loss of use, data or profits,
* whether or not advised of the possibility of damage, and on any theory of
* liability, arising out of or in connection with the use or performance
* of this software.

* Uses part of bmp2tiff
* Author: Andrey Kiselev, dron@ak4719.spb.edu

*

* Copyright (c) 2004, Andrey Kiselev <dron@ak4719.spb.edu>

*
* Permission to use, copy, modify, distribute, and sell this software and
* its documentation for any purpose is hereby granted without fee, provided
* that (i) the above copyright notices and this permission notice appear in
* all copies of the software and related documentation, and (ii) the names of
* Sam Leffler and Silicon Graphics may not be used in any advertising or
* publicity relating to the software without the specific, prior written
* permission of Sam Leffler and Silicon Graphics.

* This distribution makes use of LibJpeg Copyright (C) 1994-1997, Thomas G. Lane
This software is based in part on the work of the Independent JPEG Group

* This distribution makes use of the Boehm-Weiser Garbage Collector
Copyright 1988, 1989 Hans-J. Boehm, Alan J. Demers
Copyright (c) 1991-1995 by Xerox Corporation. All rights reserved.
Copyright (c) 1996-1999 by Silicon Graphics. All rights reserved.
Copyright (c) 1999-2001 by Hewlett-Packard. All rights reserved.

THIS MATERIAL IS PROVIDED AS IS, WITH ABSOLUTELY NO WARRANTY
EXPRESSED OR IMPLIED. ANY USE IS AT YOUR OWN RISK.

* TeX FontFixer (DVIPS bitmap to Type 1 conversion) by Tiark Rompf, used by kind permission, Thanks Tiark!

* This distribution makes use of the S-Lang Library 1.4 (C) John E. Davis - <http://www.s-lang.org/> under the Artistic License.

* This distribution makes use of QPdf <http://qpdf.sourceforge.net/> under the Artistic License 2.0 (in 'pdfwin.exe' module).

* This distribution (by use of QPDF, see above) makes use of PCRE2 library <https://www.pcre.org/>

Copyright (c) 1997-2018 University of Cambridge
All rights reserved.
Copyright(c) 2010-2018 Zoltan Herczeg

All rights reserved.

Redistribution and use in source and binary forms, with or without modification, are permitted provided that the following conditions are met:

- * Redistributions of source code must retain the above copyright notices, this list of conditions and the following disclaimer.
- * Redistributions in binary form must reproduce the above copyright notices, this list of conditions and the following disclaimer in the documentation and/or other materials provided with the distribution.
- * Neither the name of the University of Cambridge nor the names of any contributors may be used to endorse or promote products derived from this software without specific prior written permission.

THIS SOFTWARE IS PROVIDED BY THE COPYRIGHT HOLDERS AND CONTRIBUTORS "AS IS" AND ANY EXPRESS OR IMPLIED WARRANTIES, INCLUDING, BUT NOT LIMITED TO, THE IMPLIED WARRANTIES OF MERCHANTABILITY AND FITNESS FOR A PARTICULAR PURPOSE ARE DISCLAIMED. IN NO EVENT SHALL THE COPYRIGHT OWNER OR CONTRIBUTORS BE LIABLE FOR ANY DIRECT, INDIRECT, INCIDENTAL, SPECIAL, EXEMPLARY, OR CONSEQUENTIAL DAMAGES (INCLUDING, BUT NOT LIMITED TO, PROCUREMENT OF SUBSTITUTE GOODS OR SERVICES; LOSS OF USE, DATA, OR PROFITS; OR BUSINESS INTERRUPTION) HOWEVER CAUSED AND ON ANY THEORY OF LIABILITY, WHETHER IN CONTRACT, STRICT LIABILITY, OR TORT (INCLUDING NEGLIGENCE OR OTHERWISE) ARISING IN ANY WAY OUT OF THE USE OF THIS SOFTWARE, EVEN IF ADVISED OF THE POSSIBILITY OF SUCH DAMAGE.

* This distribution makes use of the Freetype Library:

Portions of this software are copyright © 2009 The FreeType Project (www.freetype.org). All rights reserved.

* This distribution makes use of the ZLIB Compression Library (C) 1995-2002 Jean-loup Gailly and Mark Adler

* This distribution uses an enhanced version of 'pdftops', part of the xpdf package by Derek B. Noonburg <derekn@foolabs.com>. This software was licensed for commercial use by Frank Siegert.

GUI Version only:

* This distribution makes use of the FLTK library which is distributed under the Lesser GPL in modified form so static linking is allowed for binary only distributions like this one, see <http://www.fltk.org> for details.

* Using "Gleam" drawing routines for the Fast Light Tool Kit (FLTK), Copyright 2001-2005 by Colin Jones, under same license as FLTK.

For the specific licenses of the ICC color profiles in the 'profiles' folder:

sRGB_Color_Space_Profile.icm

Obtained from: <http://www.srgb.com/usingsrgb.html>

The file "sRGB Color Space Profile.icm" is:
Copyright (c) 1998 Hewlett-Packard Company

To anyone who acknowledges that the file "sRGB Color Space Profile.icm" is provided "AS IS" WITH NO EXPRESS OR IMPLIED WARRANTY: permission to use, copy and distribute this file for any purpose is hereby granted without fee, provided that the file is not changed including the HP copyright notice tag, and that the name of Hewlett-Packard Company not be used in advertising or publicity pertaining to distribution of the software without specific, written prior permission. Hewlett-Packard Company makes no representations about the suitability of this software for any purpose.

default_cmyk_profile.icc

Public domain

Obtained from: <http://www.argyllcms.com/cmyk.icm>

Date: Mon, 25 Aug 2014 13:03:39 +1000
From: Graeme Gill <graeme@argyllcms.com>
To: LCMS mailing list <lcms-user@lists.sourceforge.net>
Subject: Re: [Lcms-user] free fallback CMYK profile

I'm happy to offer a public domain one based on a chemical proof measurement set, which is a pretty clean, well behaved CMYK response. The B2A table conversions are setup for an sRGB source.

You can find it here <<http://www.argyllcms.com/cmyk.icm>>

I'll include it with future ArgyllCMS releases.

Graeme Gill.

PStill © Dipl.-Ing. Frank Siegert, 2018

Dipl.-Ing. Frank Siegert, Stauferweg 35, 72555 Metzingen, Germany, eMail frank@wizards.de